

RIGHT VIEW

# Versa 5

Utility Requirements

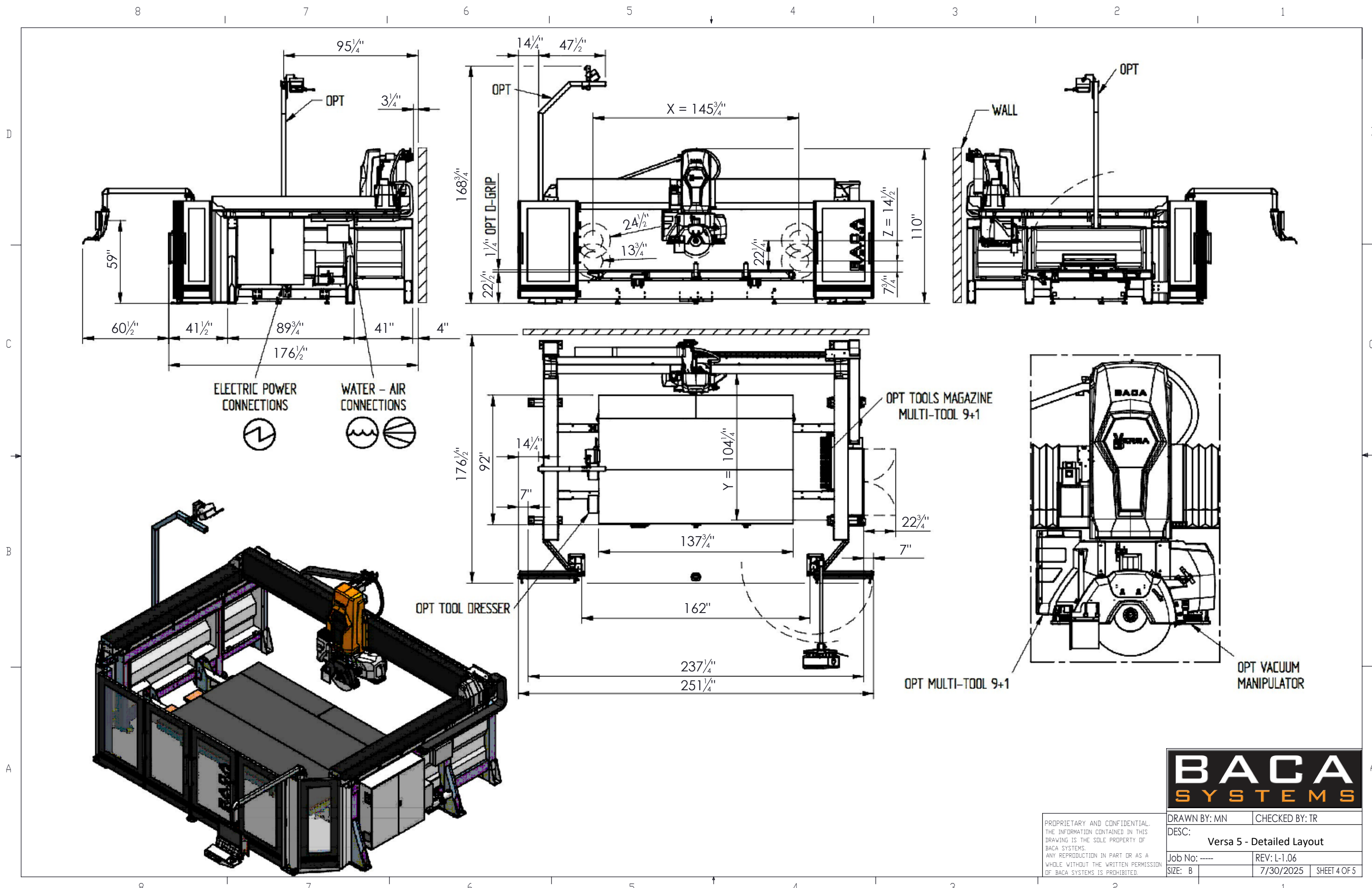
- Power:**  
TRANSFORMER INCLUDED  
208V, 3 PHASE, 80 AMPS  
220V, 3 PHASE, 74 AMPS  
240V, 3 PHASE, 68 AMPS  
460V, 3 PHASE, 40 AMPS  
480V, 3 PHASE, 36 AMPS
- Air:**  
7cfm @ 90 PSI  
\*Optional Multi-Tool requires 14cfm @ 90 PSI
- Water:**  
External Water: 10 GPM @ 30-40 PSI  
Internal Water: 1.5 GPM @ 30-40 PSI

See Pre-Install Document  
For Additional Information



FINAL PLACEMENT DETERMINED DURING INSTALLATION. DO NOT SCALE

|  |                                      |            |                |              |
|--|--------------------------------------|------------|----------------|--------------|
| PROPRIETARY AND CONFIDENTIAL.<br>THE INFORMATION CONTAINED IN THIS<br>DRAWING IS THE SOLE PROPERTY OF<br>BACA SYSTEMS.<br>ANY REPRODUCTION IN PART OR AS A<br>WHOLE WITHOUT THE WRITTEN PERMISSION<br>OF BACA SYSTEMS IS PROHIBITED. | DRAWN BY: MN                         |            | CHECKED BY: TR |              |
|  | DESC:<br><div>Versa 5 - Layout</div> |            |                |              |
|  | Job No: ----                         |            | REV: L-1.06    |              |
|  | SIZE: B                              | SCALE 1:40 | 7/30/2025      | SHEET 3 OF 5 |
|  |                                      |            |                |              |



**BACA**  
SYSTEMS

PROPRIETARY AND CONFIDENTIAL.  
THE INFORMATION CONTAINED IN THIS  
DRAWING IS THE SOLE PROPERTY OF  
BACA SYSTEMS.  
ANY REPRODUCTION IN PART OR AS A  
WHOLE WITHOUT THE WRITTEN PERMISSION  
OF BACA SYSTEMS IS PROHIBITED.

|              |                           |
|--------------|---------------------------|
| DRAWN BY: MN | CHECKED BY: TR            |
| DESC:        | Versa 5 - Detailed Layout |
| Job No: ---- | REV: L-1.06               |
| SIZE: B      | 7/30/2025 SHEET 4 OF 5    |



