

RSJM Dual Pocket Left Utilities

System Dimension:
31'-6 1/4" x 18'-6 1/2"

Overall Footprint (incl. utilities & clearance):
39'-4" x 21'-2"

Utility Requirements

Power:
1 Circuit 480V 3Phase 80A (65 FLA) (Robot)
1 Circuit 480V 3Phase 100A (63 FLA) (Pump)

Air:
5 CFM @ 85-100 PSI Range (Robot)
3 CFM @ 60-100 PSI Range (Garnet Hopper)

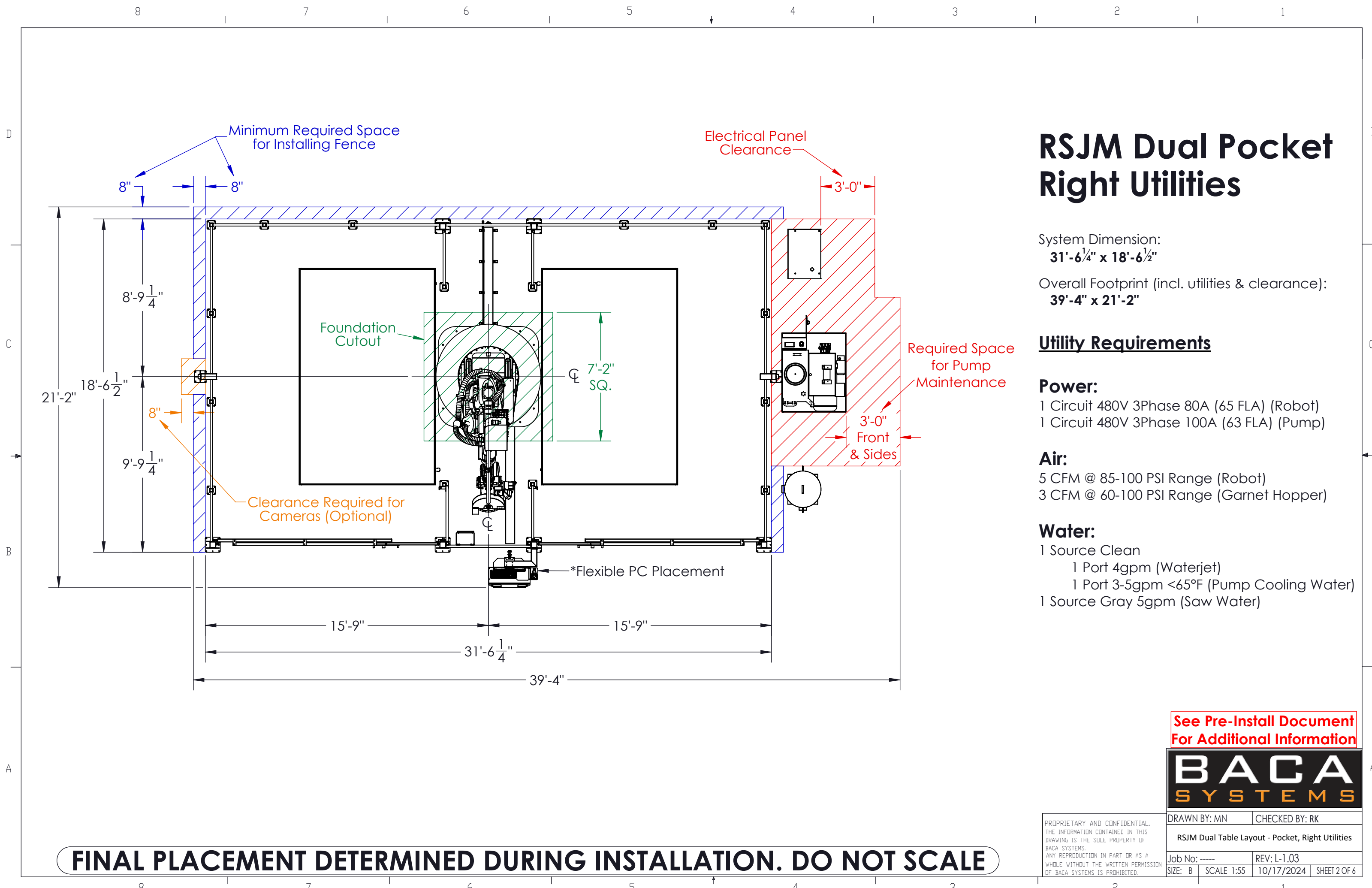
Water:
1 Source Clean
1 Port 4gpm (Waterjet)
1 Port 3-5gpm <65°F (Pump Cooling Water)
1 Source Gray 5gpm (Saw Water)

See Pre-Install Document
For Additional Information



PROPRIETARY AND CONFIDENTIAL.
THE INFORMATION CONTAINED IN THIS
DRAWING IS THE SOLE PROPERTY OF
BACA SYSTEMS.
ANY REPRODUCTION IN PART OR AS A
WHOLE WITHOUT THE WRITTEN PERMISSION
OF BACA SYSTEMS IS PROHIBITED.

DRAWN BY: MN	CHECKED BY: RK
RSJM Dual Table Layout - Pocket, Left Utilities	
Job No: -----	REV: L-1.03
SIZE: B	SCALE 1:55 10/17/2024 SHEET 1 OF 6



RSJM Dual Pocket Right Utilities

System Dimension:
31'-6 1/4" x 18'-6 1/2"

Overall Footprint (incl. utilities & clearance):
39'-4" x 21'-2"

Utility Requirements

Power:
1 Circuit 480V 3Phase 80A (65 FLA) (Robot)
1 Circuit 480V 3Phase 100A (63 FLA) (Pump)

Air:
5 CFM @ 85-100 PSI Range (Robot)
3 CFM @ 60-100 PSI Range (Garnet Hopper)

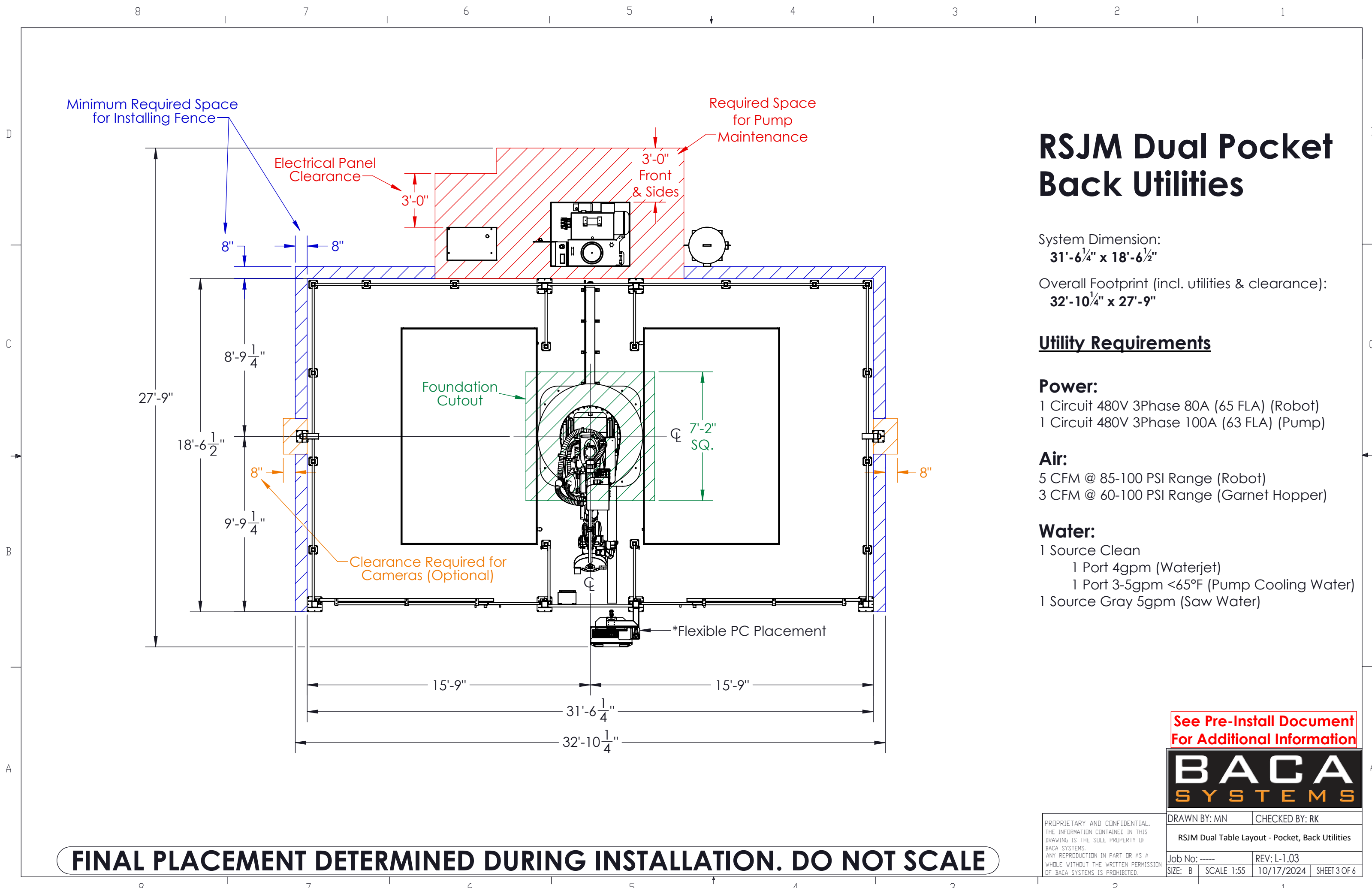
Water:
1 Source Clean
1 Port 4gpm (Waterjet)
1 Port 3-5gpm <65°F (Pump Cooling Water)
1 Source Gray 5gpm (Saw Water)

See Pre-Install Document
For Additional Information

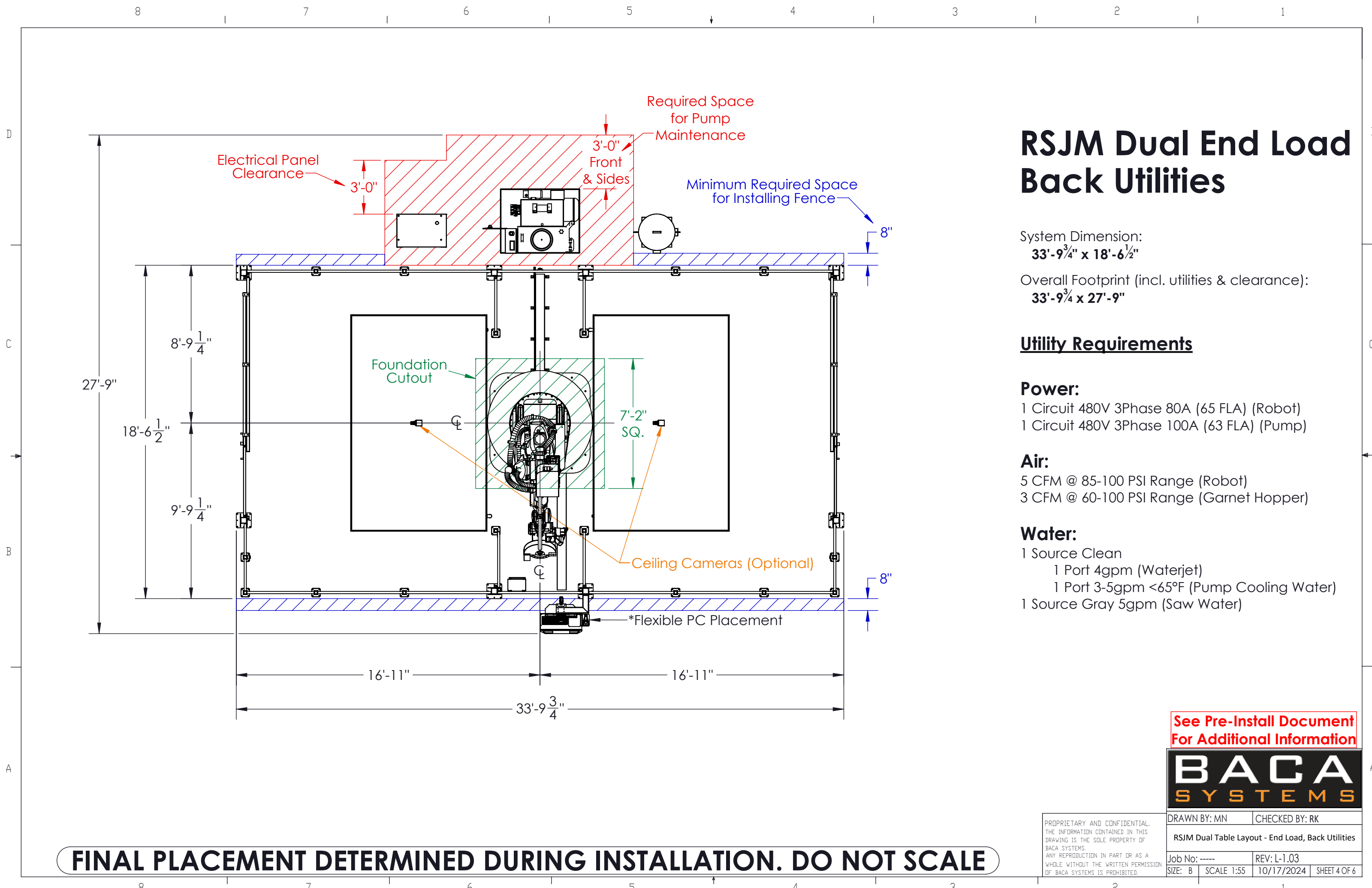


PROPRIETARY AND CONFIDENTIAL. THE INFORMATION CONTAINED IN THIS DRAWING IS THE SOLE PROPERTY OF BACA SYSTEMS. ANY REPRODUCTION IN PART OR AS A WHOLE WITHOUT THE WRITTEN PERMISSION OF BACA SYSTEMS IS PROHIBITED.		DRAWN BY: MN	CHECKED BY: RK
RSJM Dual Table Layout - Pocket, Right Utilities			
Job No: -----	REV: L-1.03		
SIZE: B	SCALE 1:55	10/17/2024	SHEET 2 OF 6

FINAL PLACEMENT DETERMINED DURING INSTALLATION. DO NOT SCALE



FINAL PLACEMENT DETERMINED DURING INSTALLATION. DO NOT SCALE



RSJM Dual End Load Back Utilities

System Dimension:
33'-9 3/4" x 18'-6 1/2"

Overall Footprint (incl. utilities & clearance):
33'-9 3/4" x 27'-9"

Utility Requirements

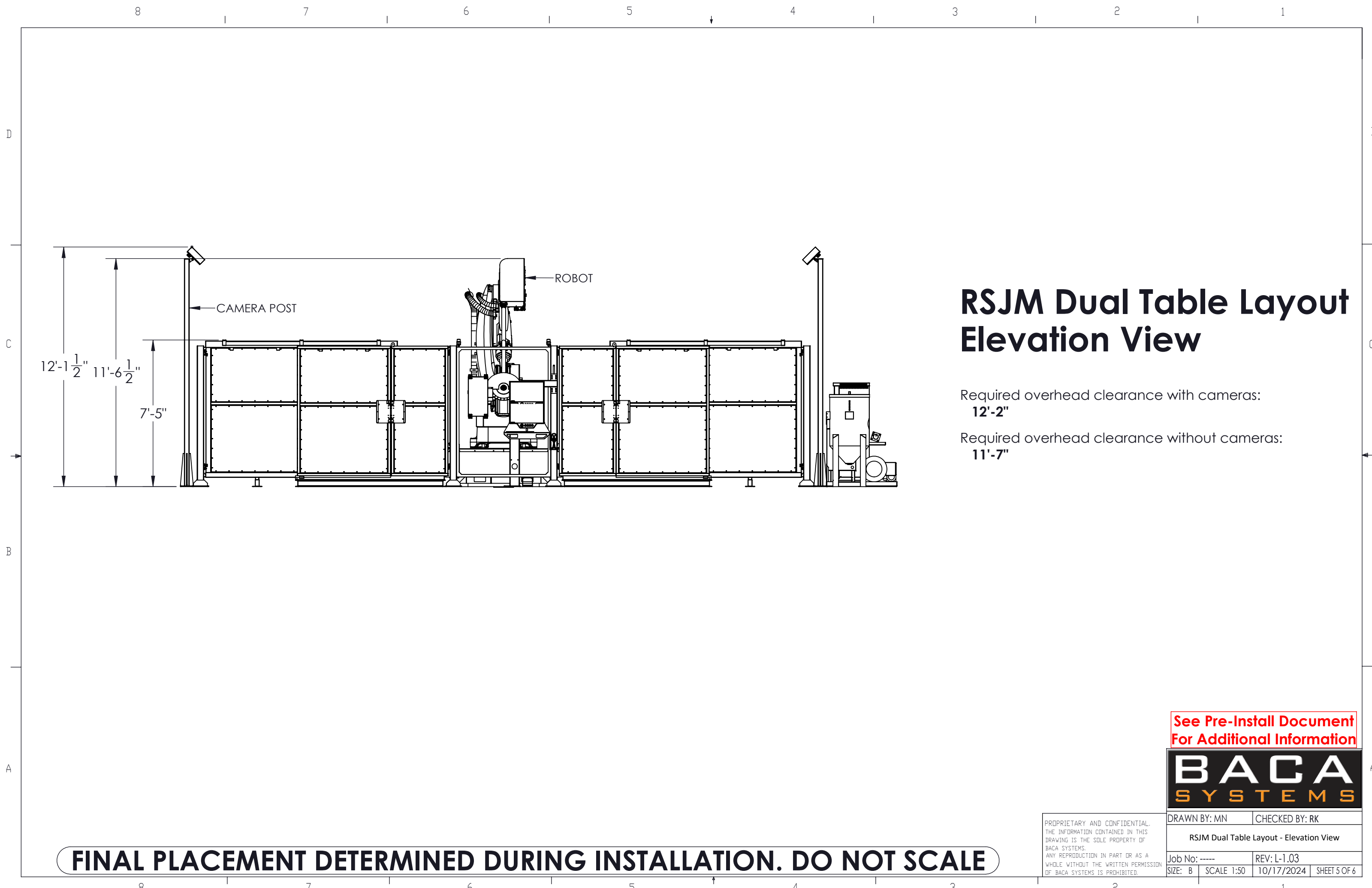
- Power:**
- 1 Circuit 480V 3Phase 80A (65 FLA) (Robot)
 - 1 Circuit 480V 3Phase 100A (63 FLA) (Pump)
- Air:**
- 5 CFM @ 85-100 PSI Range (Robot)
 - 3 CFM @ 60-100 PSI Range (Garnet Hopper)
- Water:**
- 1 Source Clean
 - 1 Port 4gpm (Waterjet)
 - 1 Port 3-5gpm <65°F (Pump Cooling Water)
 - 1 Source Gray 5gpm (Saw Water)

See Pre-Install Document
For Additional Information



FINAL PLACEMENT DETERMINED DURING INSTALLATION. DO NOT SCALE

PROPRIETARY AND CONFIDENTIAL. THE INFORMATION CONTAINED IN THIS DRAWING IS THE SOLE PROPERTY OF BACA SYSTEMS. ANY REPRODUCTION IN PART OR AS A WHOLE WITHOUT THE WRITTEN PERMISSION OF BACA SYSTEMS IS PROHIBITED.		DRAWN BY: MN	CHECKED BY: RK
RSJM Dual Table Layout - End Load, Back Utilities			
Job No: -----	REV: L-1.03		
SIZE: B	SCALE 1:55	10/17/2024	SHEET 4 OF 6



RSJM Dual Table Layout Elevation View

Required overhead clearance with cameras:
12'-2"

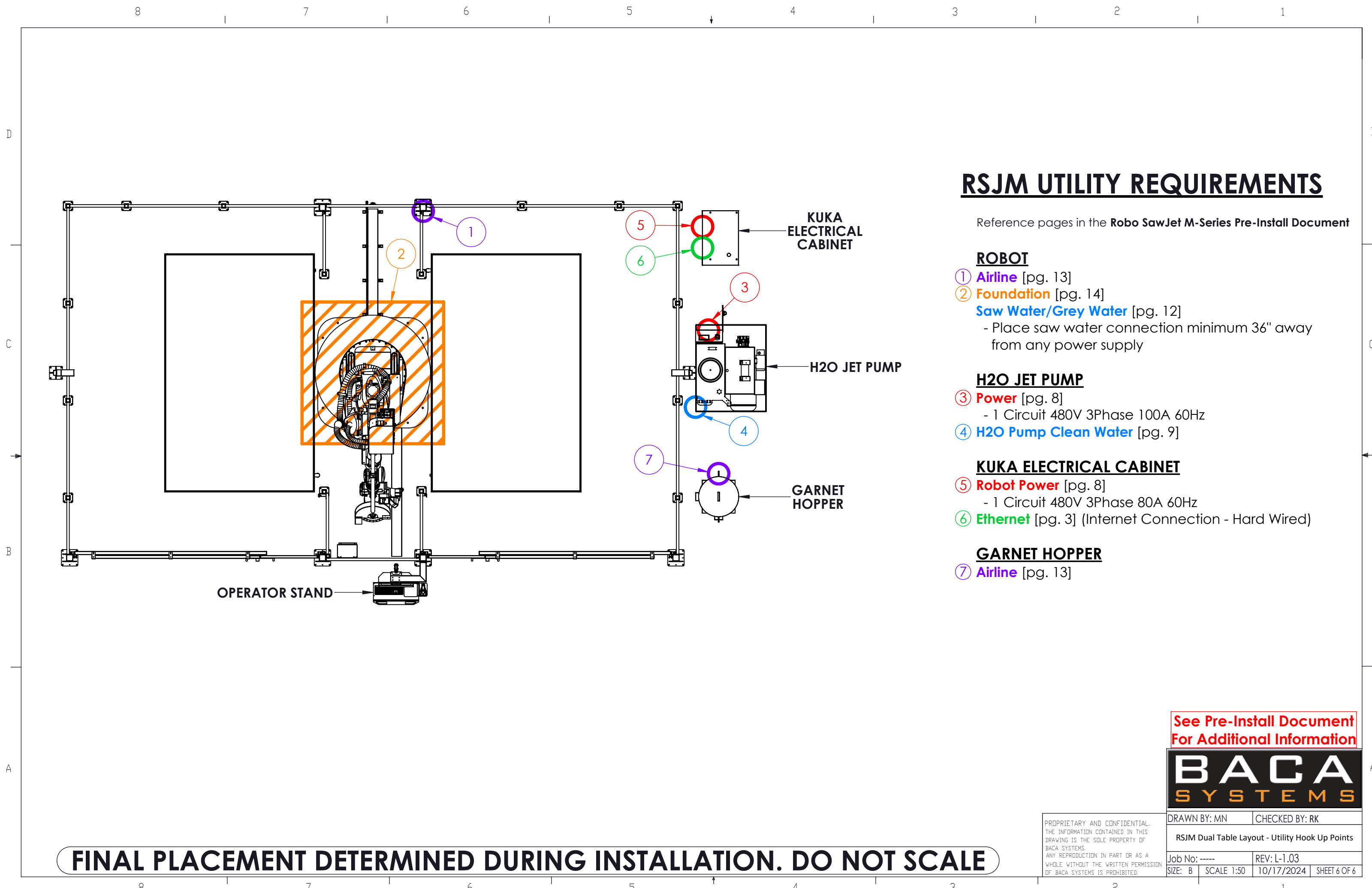
Required overhead clearance without cameras:
11'-7"

See Pre-Install Document
For Additional Information



FINAL PLACEMENT DETERMINED DURING INSTALLATION. DO NOT SCALE

PROPRIETARY AND CONFIDENTIAL. THE INFORMATION CONTAINED IN THIS DRAWING IS THE SOLE PROPERTY OF BACA SYSTEMS. ANY REPRODUCTION IN PART OR AS A WHOLE WITHOUT THE WRITTEN PERMISSION OF BACA SYSTEMS IS PROHIBITED.	DRAWN BY: MN		CHECKED BY: RK	
	RSJM Dual Table Layout - Elevation View			
	Job No: -----		REV: L-1.03	
	SIZE: B	SCALE 1:50	10/17/2024	SHEET 5 OF 6



RSJM UTILITY REQUIREMENTS

Reference pages in the **Robo SawJet M-Series Pre-Install Document**

ROBOT

- ① **Airline** [pg. 13]
- ② **Foundation** [pg. 14]
- Saw Water/Grey Water** [pg. 12]
 - Place saw water connection minimum 36" away from any power supply

H2O JET PUMP

- ③ **Power** [pg. 8]
 - 1 Circuit 480V 3Phase 100A 60Hz
- ④ **H2O Pump Clean Water** [pg. 9]

KUKA ELECTRICAL CABINET

- ⑤ **Robot Power** [pg. 8]
 - 1 Circuit 480V 3Phase 80A 60Hz
- ⑥ **Ethernet** [pg. 3] (Internet Connection - Hard Wired)

GARNET HOPPER

- ⑦ **Airline** [pg. 13]

See Pre-Install Document
For Additional Information



PROPRIETARY AND CONFIDENTIAL. THE INFORMATION CONTAINED IN THIS DRAWING IS THE SOLE PROPERTY OF BACA SYSTEMS. ANY REPRODUCTION IN PART OR AS A WHOLE WITHOUT THE WRITTEN PERMISSION OF BACA SYSTEMS IS PROHIBITED.	DRAWN BY: MN		CHECKED BY: RK	
	RSJM Dual Table Layout - Utility Hook Up Points			
	Job No: -----		REV: L-1.03	
	SIZE: B	SCALE 1:50	10/17/2024	SHEET 6 OF 6

FINAL PLACEMENT DETERMINED DURING INSTALLATION. DO NOT SCALE