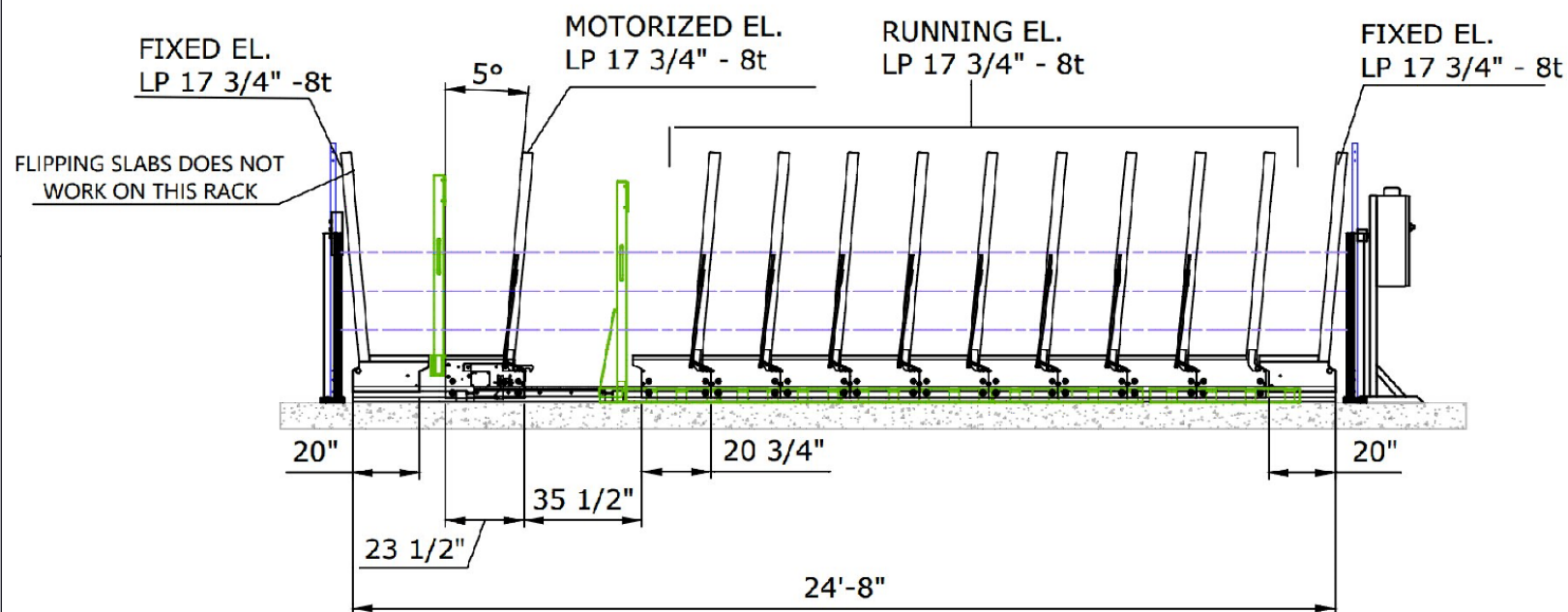
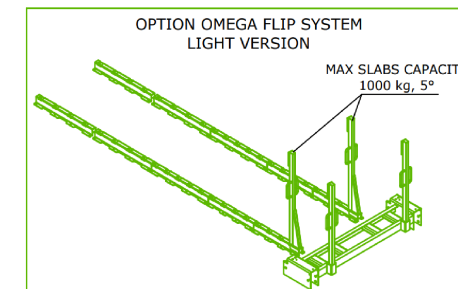
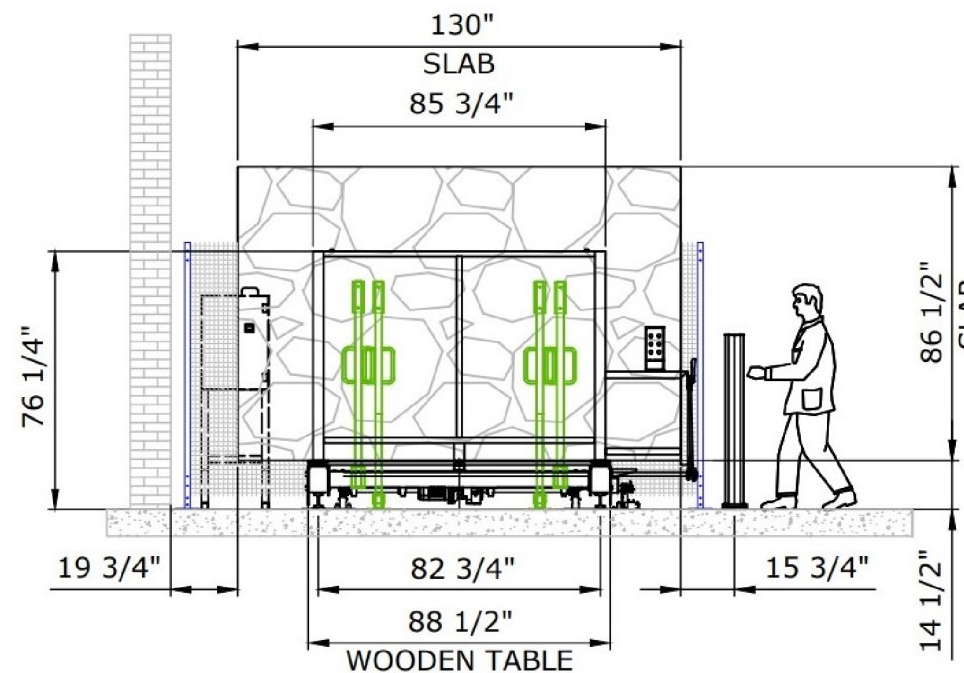


# Semi-Auto Tite Rack 264 Layout

**FRONT VIEW:**



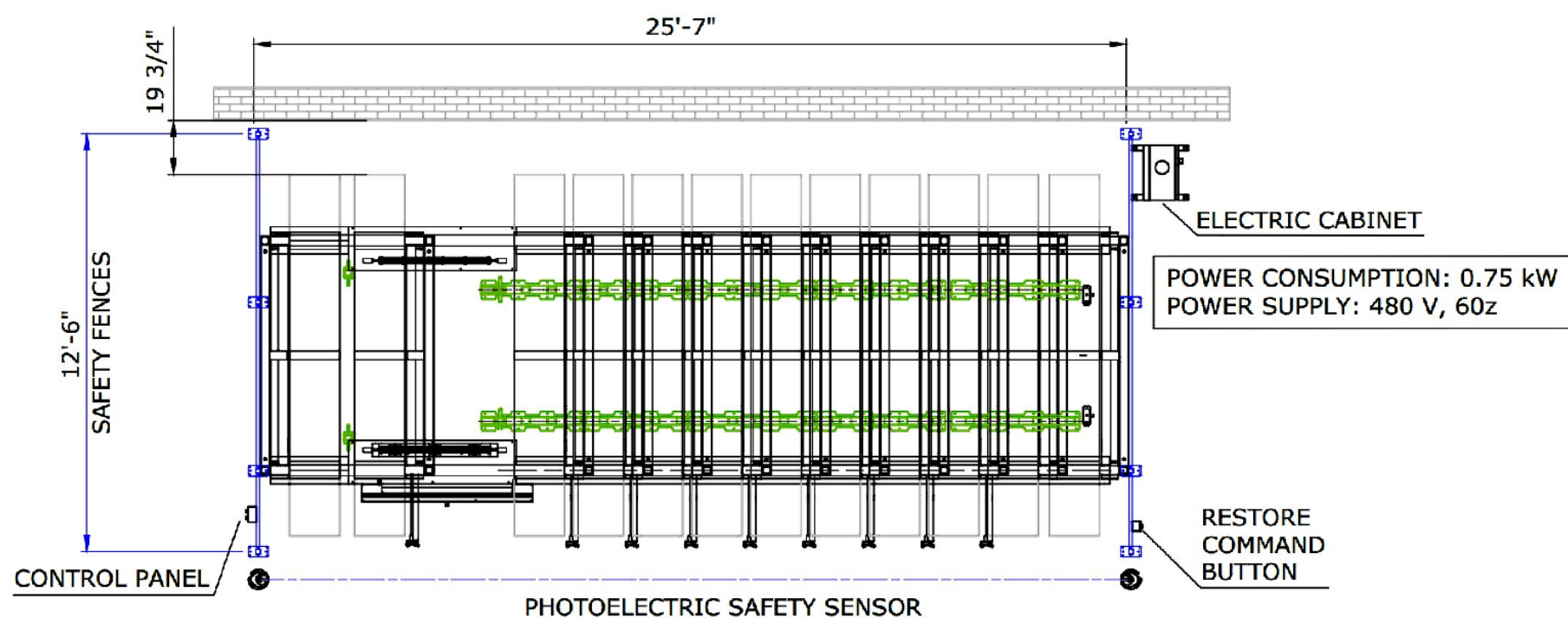
**SIDE VIEW:**



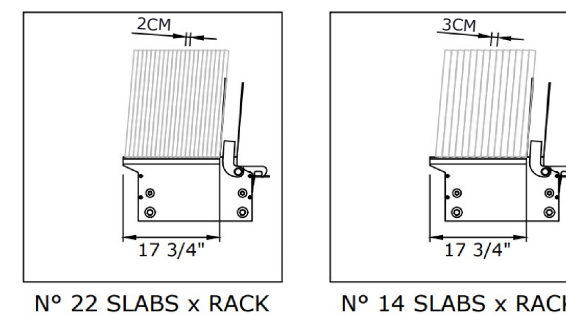
**TOTAL SLABS CAPACITY:**

2CM	264
3CM	168

**TOP VIEW:**



**INDIVIDUAL RACK SIZE:**



Semi-Auto Tite Rack 264 System Details	
Total number of racks	12
Overall system dimensions	25' 7" x 12' 6"
Max number of 2CM slabs on each rack	22 slabs
Max number of 3CM slabs on each rack	14 slabs
Total Capacity	96 tons
Total Weight	3.8 tons
Power Supply	480V 1 Phase
Power Consumption	0.75 kW



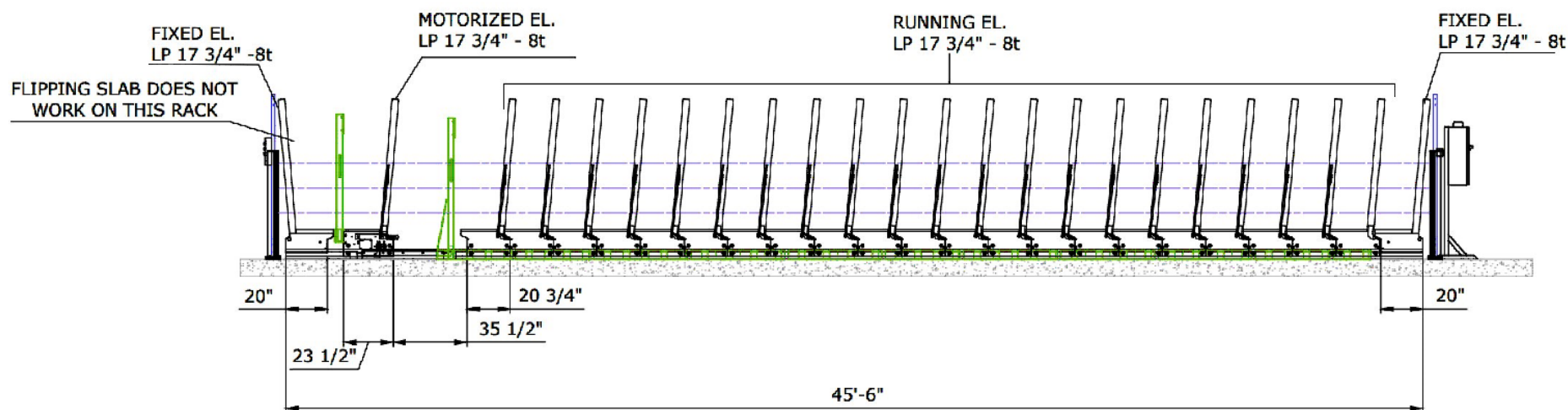
PROPRIETARY AND CONFIDENTIAL. THE INFORMATION CONTAINED IN THIS DRAWING IS THE SOLE PROPERTY OF BACA SYSTEMS. ANY REPRODUCTION IN PART OR AS A WHOLE WITHOUT THE WRITTEN PERMISSION OF BACA SYSTEMS IS PROHIBITED.

DRAWN BY: MN	CHECKED BY: TR
DESC: Semi-Auto Tite Rack 264 - Layout	
Job No: -----	REV: L-1.01
SIZE: B	NOT TO SCALE
1/18/2024	SHEET 1 OF 4

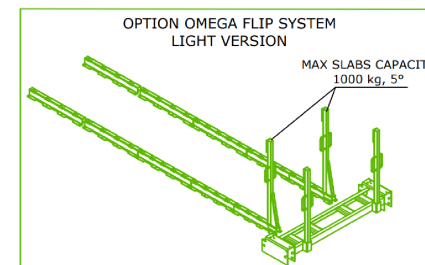
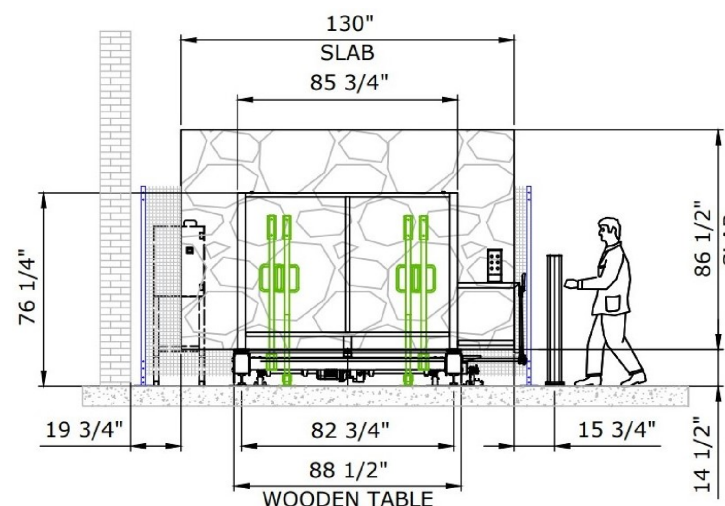
**FINAL PLACEMENT DETERMINED DURING INSTALLATION. DO NOT SCALE**

# Semi-Auto Tite Rack 528 Layout

**FRONT VIEW:**



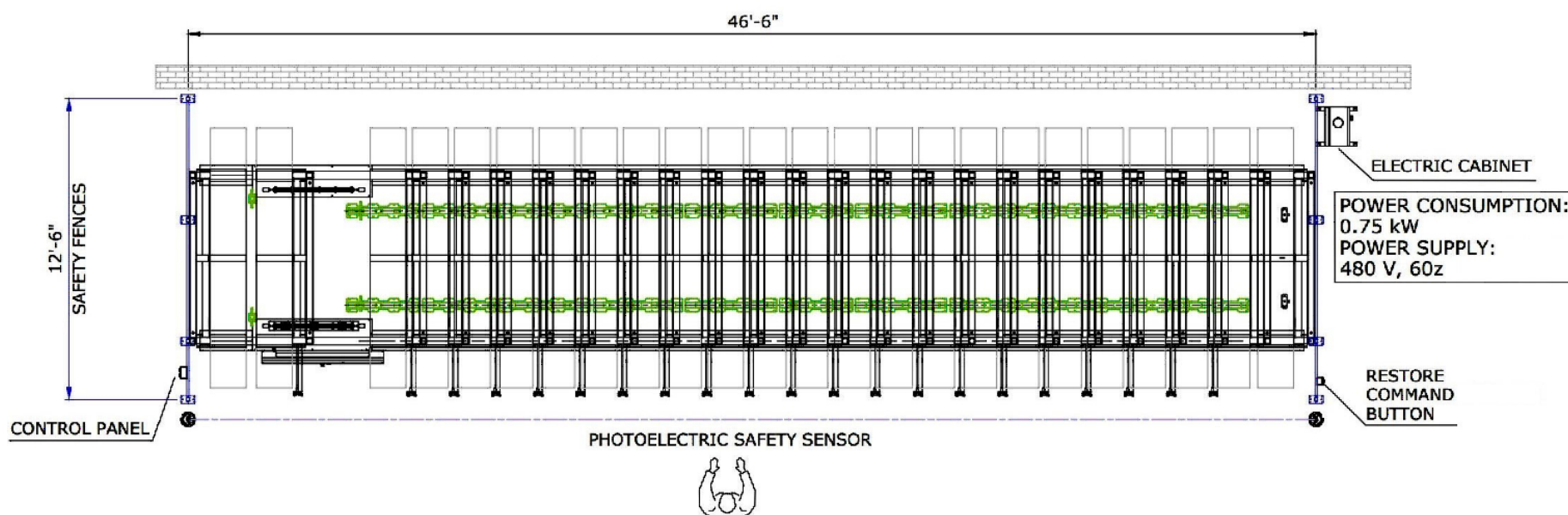
**SIDE VIEW:**



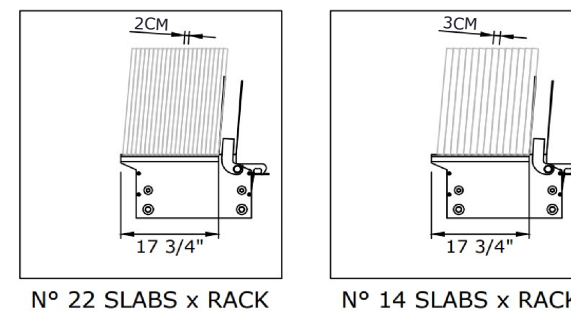
**TOTAL SLABS CAPACITY:**

2CM	528
3CM	336

**TOP VIEW:**



**INDIVIDUAL RACK SIZE:**



Semi-Auto Tite Rack 528 System Details	
Total number of racks	24
Overall system dimensions	46' 6" x 12' 6"
Max number of 2CM slabs on each rack	22 slabs
Max number of 3CM slabs on each rack	14 slabs
Total Capacity	192 tons
Total Weight	7.5 tons
Power Supply	480V 1 Phase
Power Consumption	0.75 kW



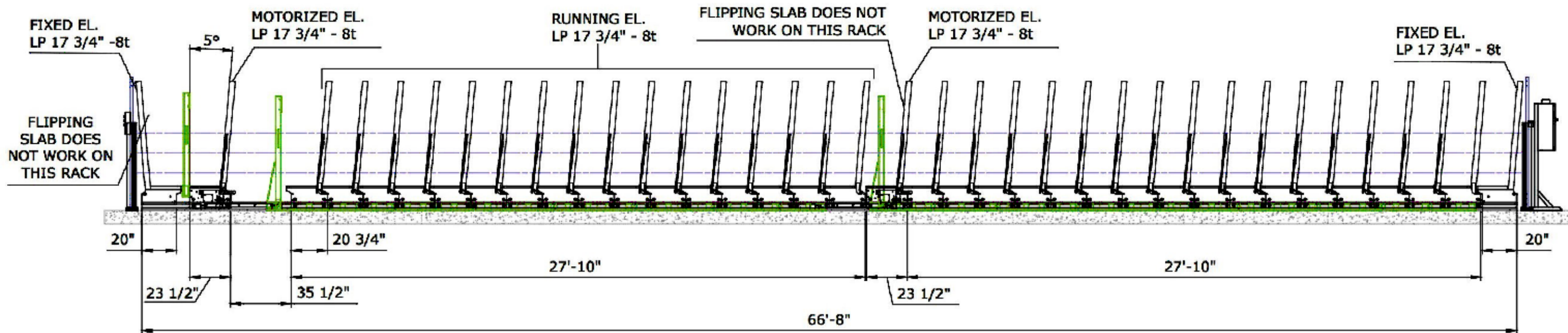
**FINAL PLACEMENT DETERMINED DURING INSTALLATION. DO NOT SCALE**

PROPRIETARY AND CONFIDENTIAL. THE INFORMATION CONTAINED IN THIS DRAWING IS THE SOLE PROPERTY OF BACA SYSTEMS. ANY REPRODUCTION IN PART OR AS A WHOLE WITHOUT THE WRITTEN PERMISSION OF BACA SYSTEMS IS PROHIBITED.

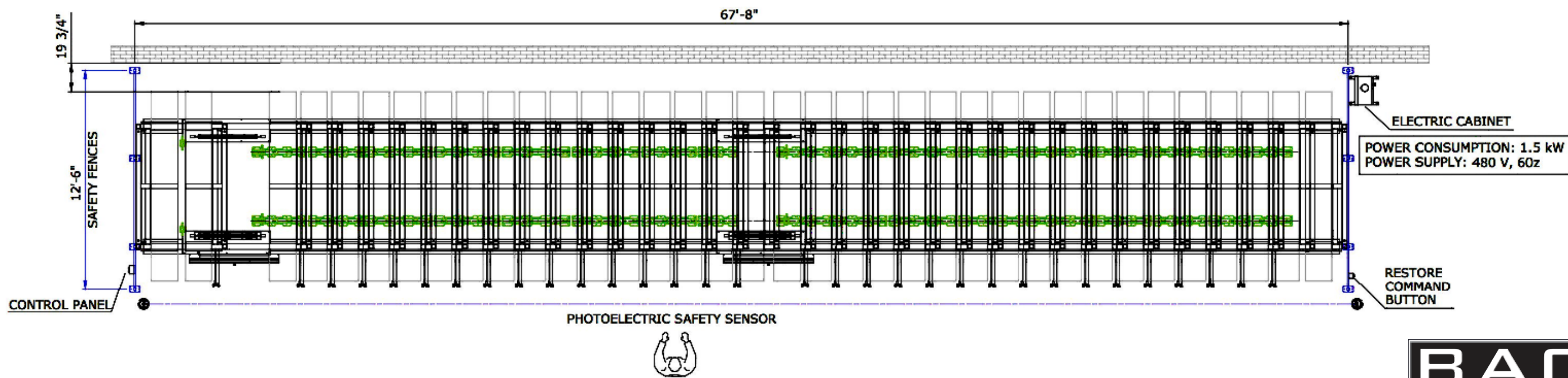
DRAWN BY: MN	CHECKED BY: TR
DESC: Semi-Auto Tite Rack 528 - Layout	
Job No: -----	REV: L-1.01
SIZE: B	NOT TO SCALE
1/18/2024	SHEET 2 OF 4

# Semi-Auto Tite Rack 792 Layout

## FRONT VIEW:



## TOP VIEW:



**FINAL PLACEMENT DETERMINED DURING INSTALLATION. DO NOT SCALE**

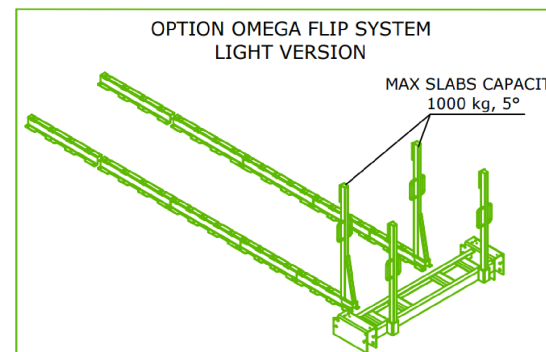
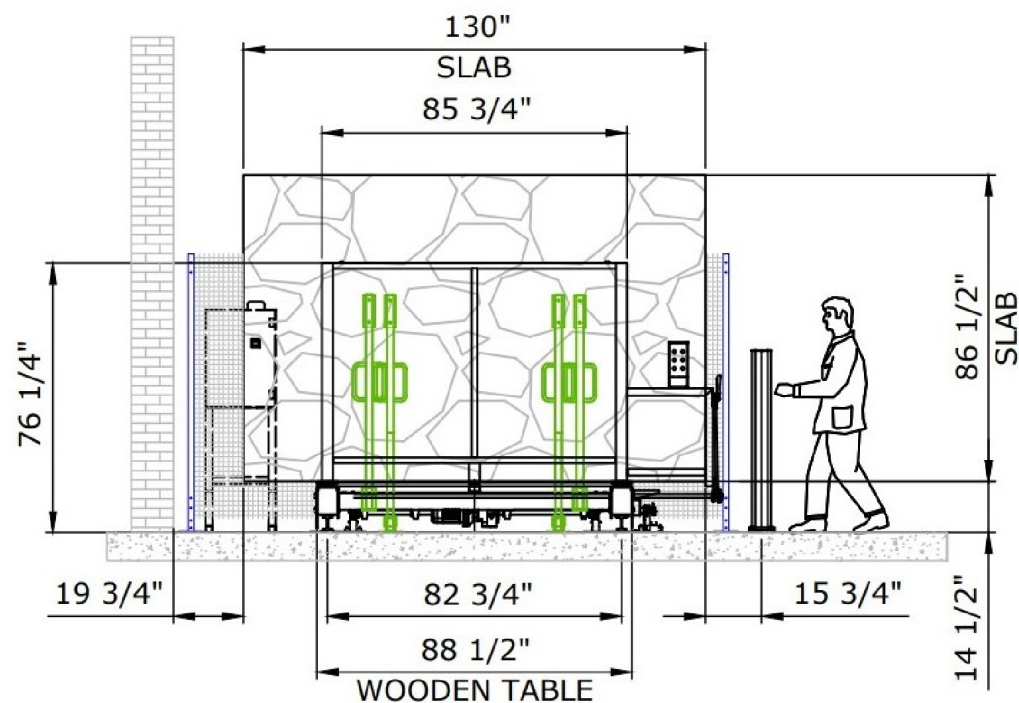
PROPRIETARY AND CONFIDENTIAL.  
THE INFORMATION CONTAINED IN THIS  
DRAWING IS THE SOLE PROPERTY OF  
BACA SYSTEMS.  
ANY REPRODUCTION IN PART OR AS A  
WHOLE WITHOUT THE WRITTEN PERMISSION  
OF BACA SYSTEMS IS PROHIBITED.

**BACA**  
SYSTEMS

DRAWN BY: MN	CHECKED BY: TR
DESC: Semi-Auto Tite Rack 792 - Layout	
Job No: -----	REV: L-1.01
SIZE: B	NOT TO SCALE
1/18/2024	SHEET 3 OF 4

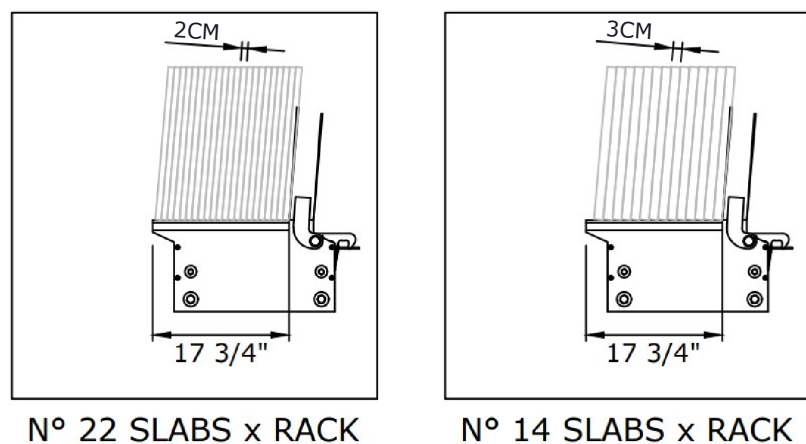
# Semi-Auto Tite Rack 792 Layout

## SIDE VIEW:



TOTAL SLABS CAPACITY:	
2CM	792
3CM	504

## INDIVIDUAL RACK SIZE:



Semi-Auto Tite Rack 792 System Details	
Total number of racks	36
Overall system dimensions	67' 8" x 12' 6"
Max number of 2CM slabs on each rack	22 slabs
Max number of 3CM slabs on each rack	14 slabs
Total Capacity	288 tons
Total Weight	11.5 tons
Power Supply	480V 1 Phase
Power Consumption	1.5 kW



DRAWN BY: MN	CHECKED BY: TR
DESC: Semi-Auto Tite Rack 792 - Layout	
Job No: -----	REV: L-1.01
SIZE: B	NOT TO SCALE
1/18/2024	SHEET 4 OF 4

**FINAL PLACEMENT DETERMINED DURING INSTALLATION. DO NOT SCALE**

PROPRIETARY AND CONFIDENTIAL. THE INFORMATION CONTAINED IN THIS DRAWING IS THE SOLE PROPERTY OF BACA SYSTEMS. ANY REPRODUCTION IN PART OR AS A WHOLE WITHOUT THE WRITTEN PERMISSION OF BACA SYSTEMS IS PROHIBITED.