

RSJ Dual Pocket Left Utilities

System Dimension:
29' x 17'-3"

Overall Footprint (incl. utilities & clearance):
37'-8" x 17'-11"

Utility Requirements

Power:
1 Circuit 480V 3Phase 80A 60Hz (Robot)
1 Circuit 480V 3Phase 100A 60Hz (Pump)

Air:
1 Source 4cfm
1 Port (Robot)
1 Port (Abrasive Hopper)

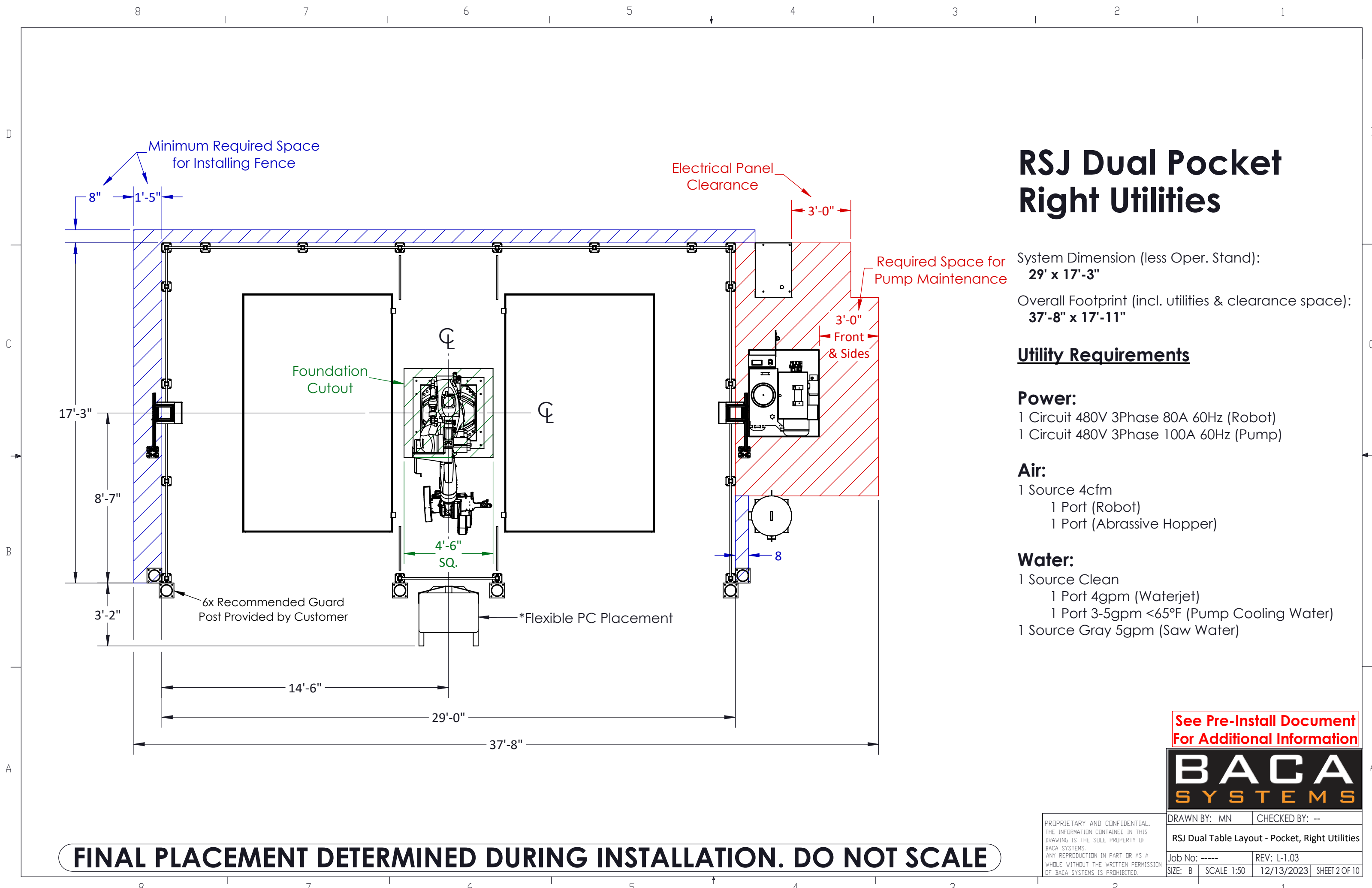
Water:
1 Source Clean
1 Port 4gpm (Waterjet)
1 Port 3-5gpm <65°F (Pump Cooling Water)
1 Source Gray 5gpm (Saw Water)

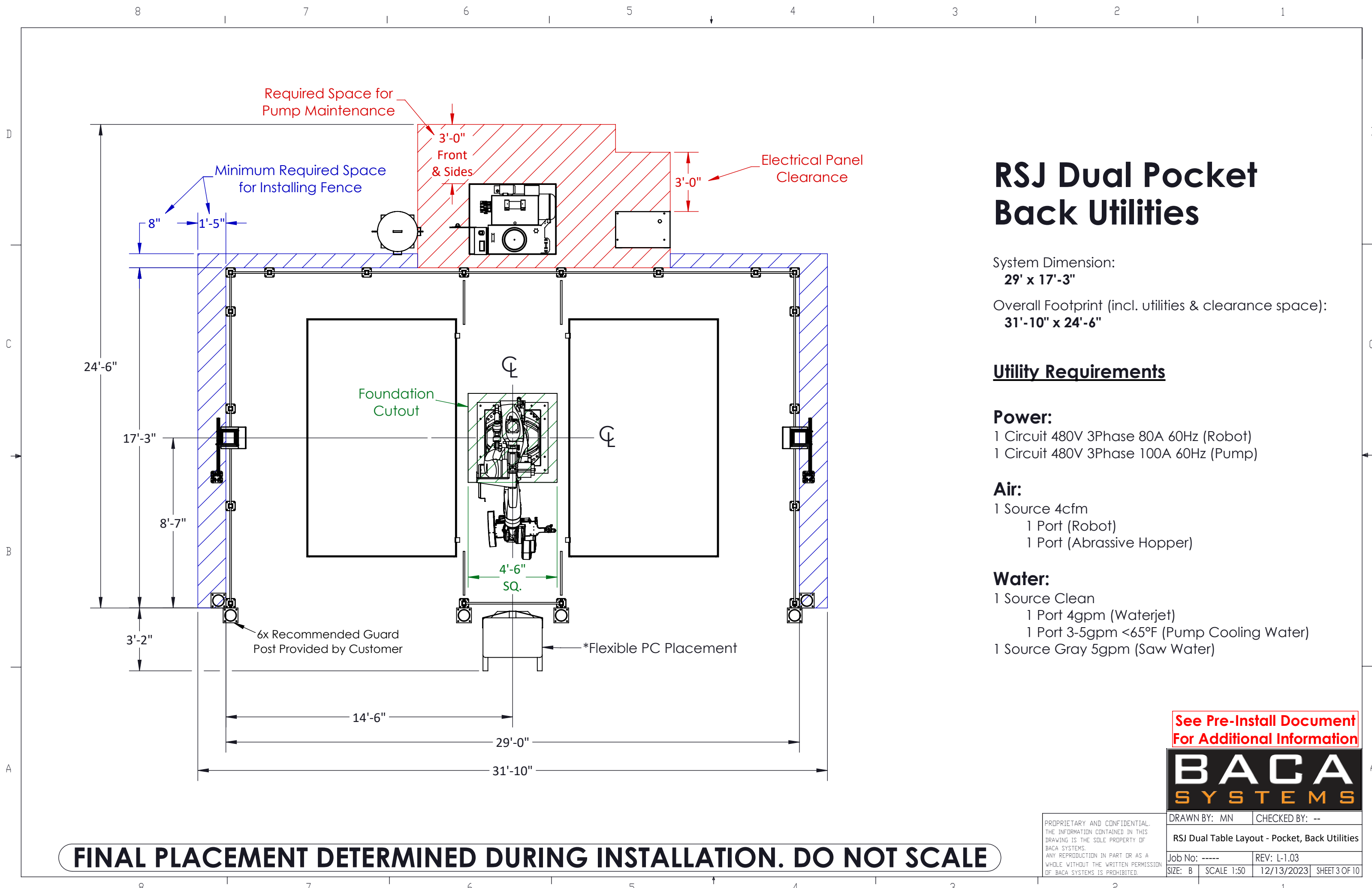
See Pre-Install Document
For Additional Information



PROPRIETARY AND CONFIDENTIAL. THE INFORMATION CONTAINED IN THIS DRAWING IS THE SOLE PROPERTY OF BACA SYSTEMS. ANY REPRODUCTION IN PART OR AS A WHOLE WITHOUT THE WRITTEN PERMISSION OF BACA SYSTEMS IS PROHIBITED.				DRAWN BY: MN	CHECKED BY: --
RSJ Dual Table Layout - Pocket, Left Utilities					
Job No: -----			REV: L-1.03		
SIZE: B	SCALE 1:50	12/13/2023	SHEET 1 OF 10		

FINAL PLACEMENT DETERMINED DURING INSTALLATION. DO NOT SCALE





RSJ Dual Pocket Back Utilities

System Dimension:
29' x 17'-3"

Overall Footprint (incl. utilities & clearance space):
31'-10" x 24'-6"

Utility Requirements

Power:
1 Circuit 480V 3Phase 80A 60Hz (Robot)
1 Circuit 480V 3Phase 100A 60Hz (Pump)

Air:
1 Source 4cfm
1 Port (Robot)
1 Port (Abrasive Hopper)

Water:
1 Source Clean
1 Port 4gpm (Waterjet)
1 Port 3-5gpm <65°F (Pump Cooling Water)
1 Source Gray 5gpm (Saw Water)

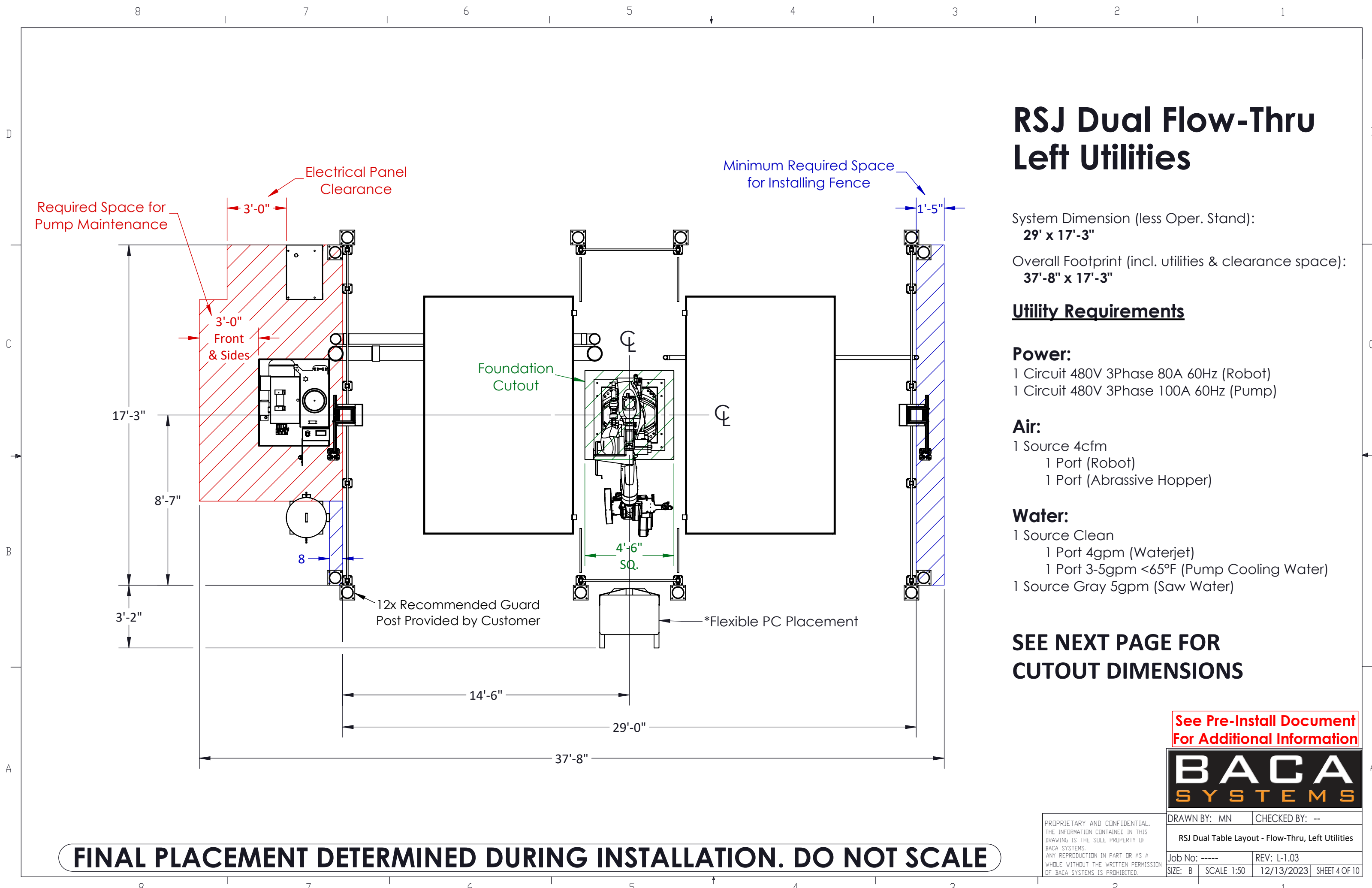
See Pre-Install Document
For Additional Information

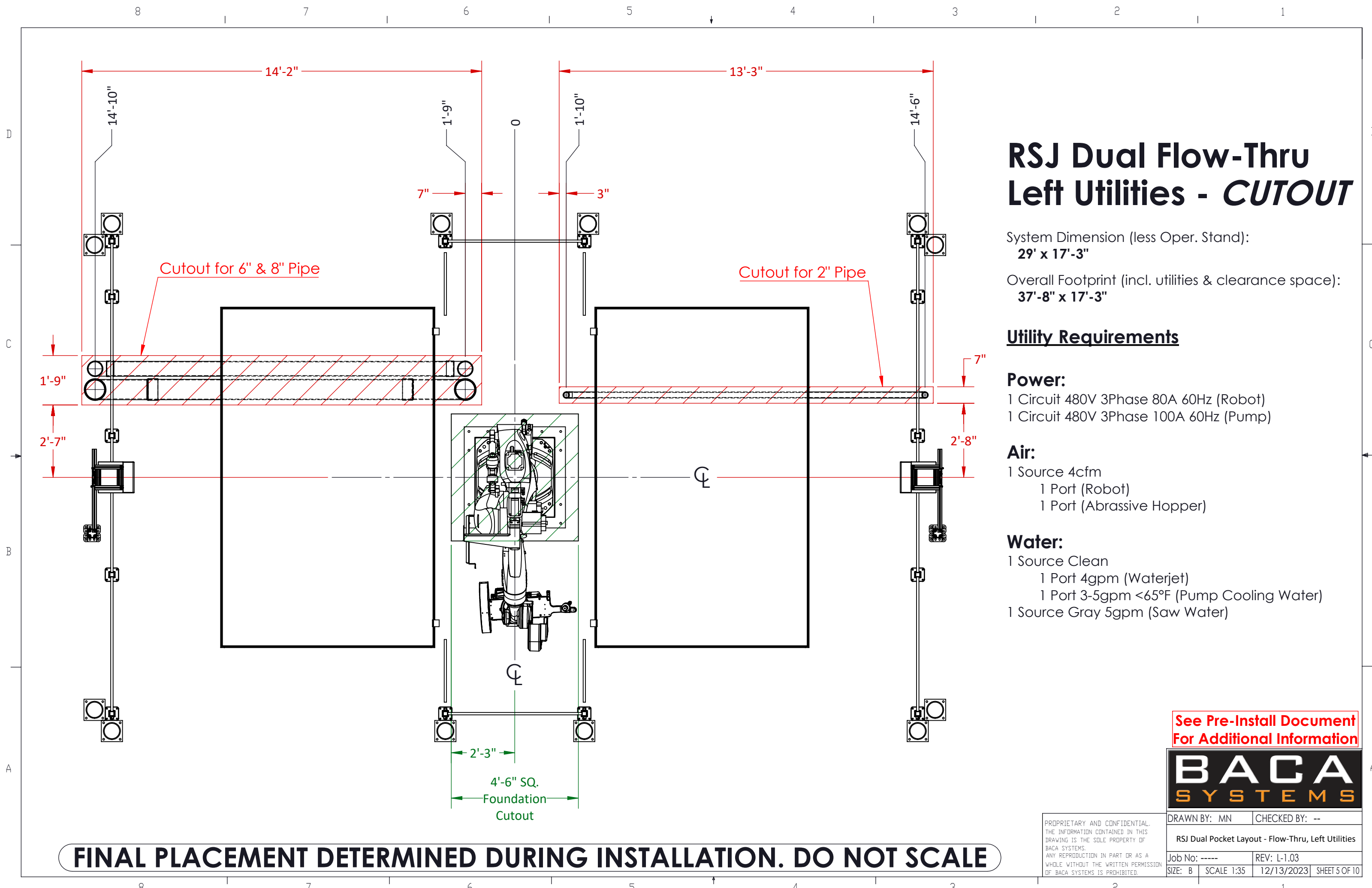


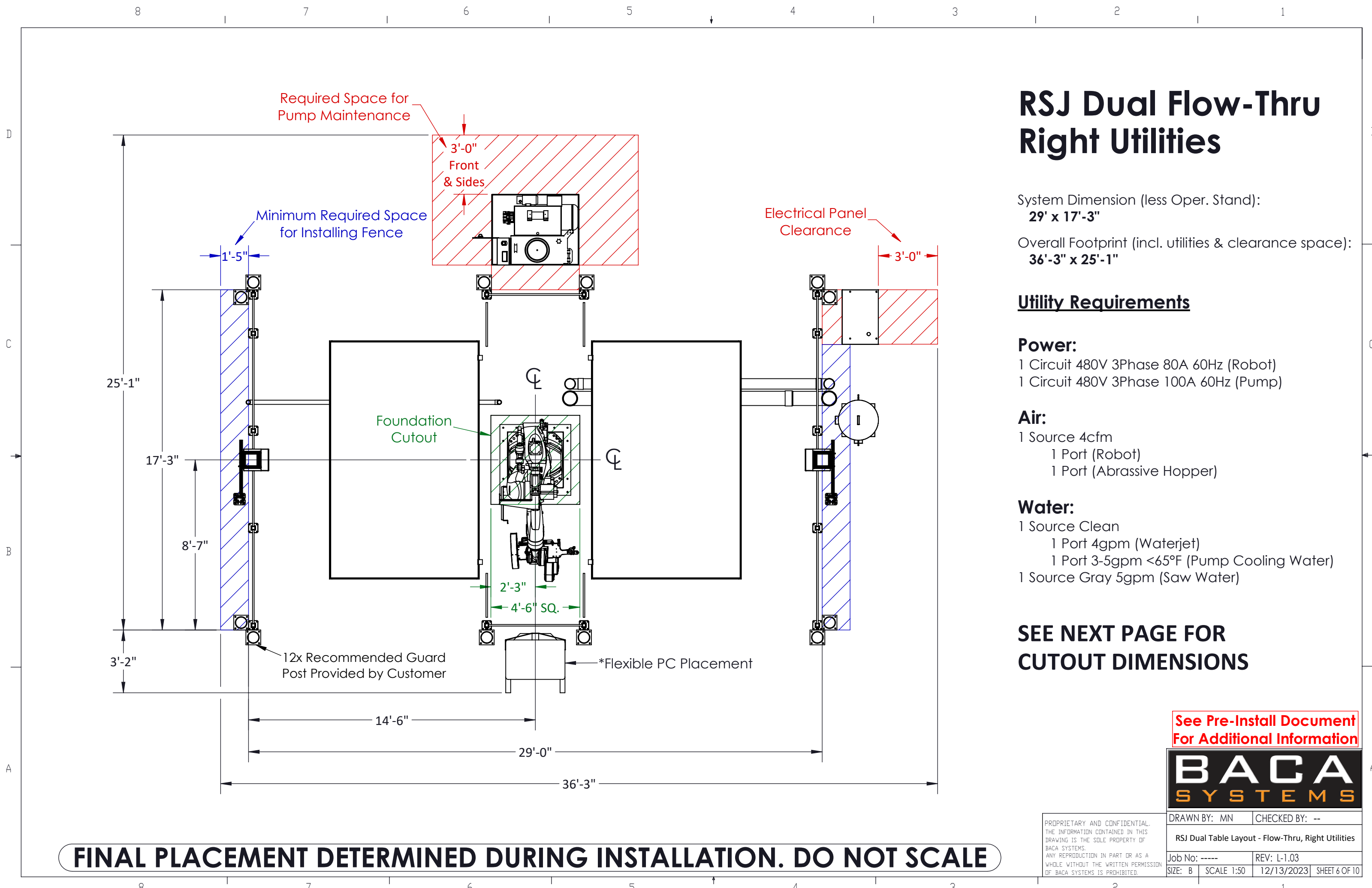
PROPRIETARY AND CONFIDENTIAL.
THE INFORMATION CONTAINED IN THIS
DRAWING IS THE SOLE PROPERTY OF
BACA SYSTEMS.
ANY REPRODUCTION IN PART OR AS A
WHOLE WITHOUT THE WRITTEN PERMISSION
OF BACA SYSTEMS IS PROHIBITED.

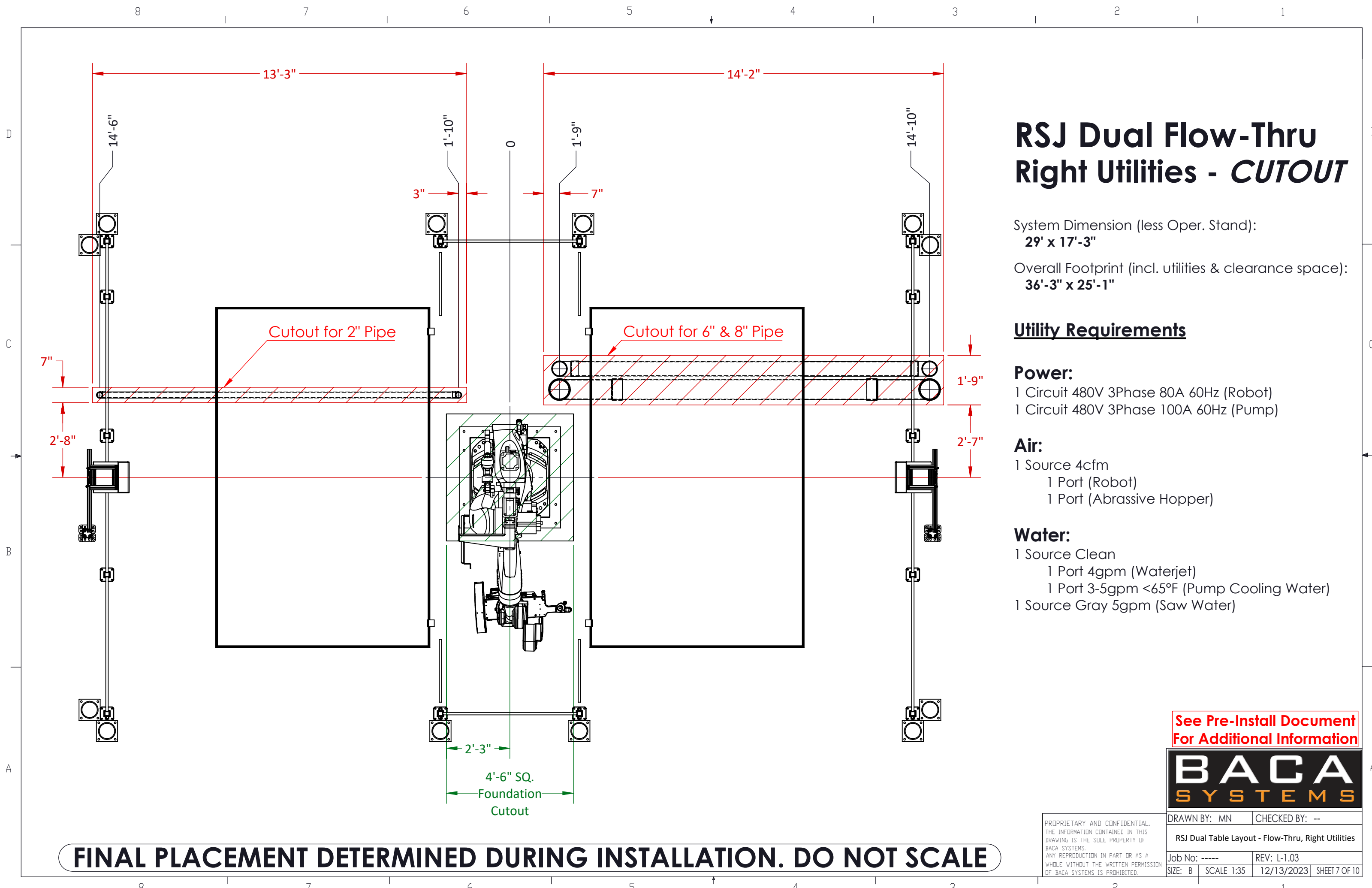
DRAWN BY: MN	CHECKED BY: --
RSJ Dual Table Layout - Pocket, Back Utilities	
Job No: -----	REV: L-1.03
SIZE: B	SCALE 1:50
12/13/2023	SHEET 3 OF 10

FINAL PLACEMENT DETERMINED DURING INSTALLATION. DO NOT SCALE









RSJ Dual Flow-Thru Right Utilities - *CUTOUT*

System Dimension (less Oper. Stand):
29' x 17'-3"

Overall Footprint (incl. utilities & clearance space):
36'-3" x 25'-1"

Utility Requirements

Power:
1 Circuit 480V 3Phase 80A 60Hz (Robot)
1 Circuit 480V 3Phase 100A 60Hz (Pump)

Air:
1 Source 4cfm
1 Port (Robot)
1 Port (Abrasive Hopper)

Water:
1 Source Clean
1 Port 4gpm (Waterjet)
1 Port 3-5gpm <65°F (Pump Cooling Water)
1 Source Gray 5gpm (Saw Water)

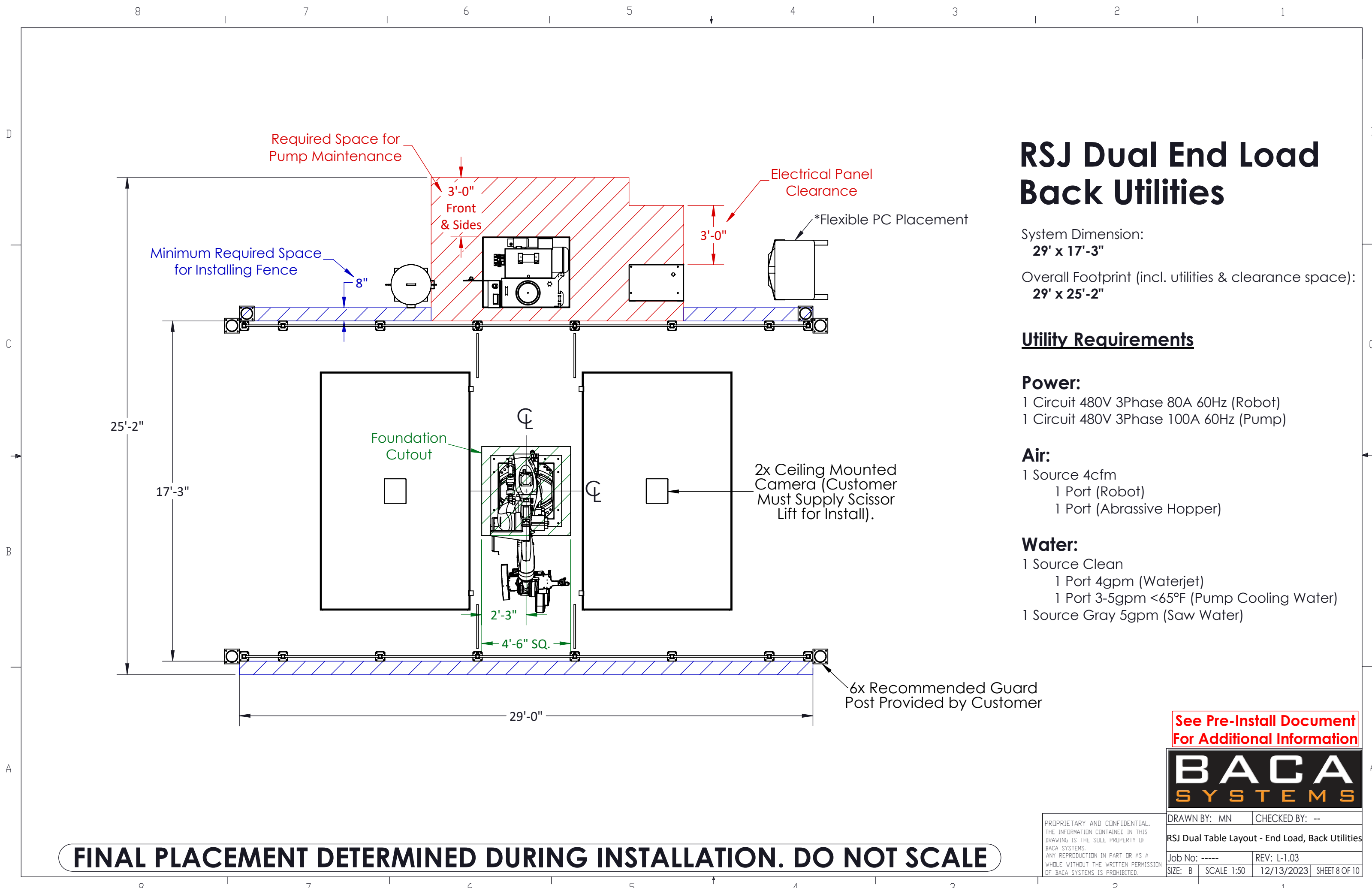
See Pre-Install Document
For Additional Information



PROPRIETARY AND CONFIDENTIAL.
THE INFORMATION CONTAINED IN THIS
DRAWING IS THE SOLE PROPERTY OF
BACA SYSTEMS.
ANY REPRODUCTION IN PART OR AS A
WHOLE WITHOUT THE WRITTEN PERMISSION
OF BACA SYSTEMS IS PROHIBITED.

DRAWN BY: MN	CHECKED BY: --
RSJ Dual Table Layout - Flow-Thru, Right Utilities	
Job No: -----	REV: L-1.03
SIZE: B	SCALE 1:35
12/13/2023	SHEET 7 OF 10

FINAL PLACEMENT DETERMINED DURING INSTALLATION. DO NOT SCALE



RSJ Dual End Load Back Utilities

System Dimension:
29' x 17'-3"

Overall Footprint (incl. utilities & clearance space):
29' x 25'-2"

Utility Requirements

Power:

- 1 Circuit 480V 3Phase 80A 60Hz (Robot)
- 1 Circuit 480V 3Phase 100A 60Hz (Pump)

Air:

- 1 Source 4cfm
 - 1 Port (Robot)
 - 1 Port (Abrasive Hopper)

Water:

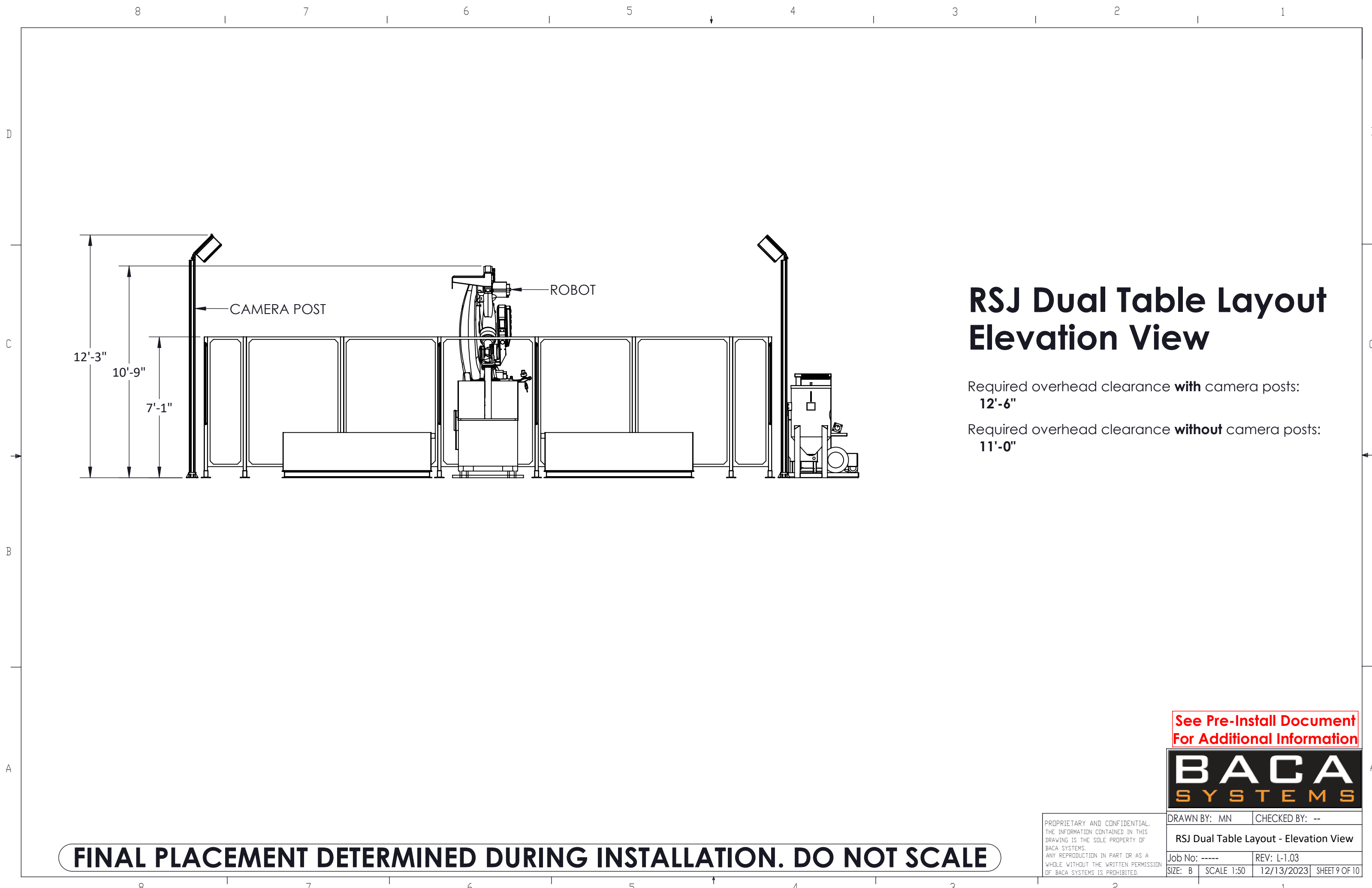
- 1 Source Clean
 - 1 Port 4gpm (Waterjet)
 - 1 Port 3-5gpm <65°F (Pump Cooling Water)
- 1 Source Gray 5gpm (Saw Water)

See Pre-Install Document
For Additional Information



PROPRIETARY AND CONFIDENTIAL. THE INFORMATION CONTAINED IN THIS DRAWING IS THE SOLE PROPERTY OF BACA SYSTEMS. ANY REPRODUCTION IN PART OR AS A WHOLE WITHOUT THE WRITTEN PERMISSION OF BACA SYSTEMS IS PROHIBITED.				DRAWN BY: MN	CHECKED BY: --
RSJ Dual Table Layout - End Load, Back Utilities					
Job No: -----		REV: L-1.03			
SIZE: B	SCALE 1:50	12/13/2023	SHEET 8 OF 10		

FINAL PLACEMENT DETERMINED DURING INSTALLATION. DO NOT SCALE



RSJ Dual Table Layout Elevation View

Required overhead clearance **with** camera posts:
12'-6"

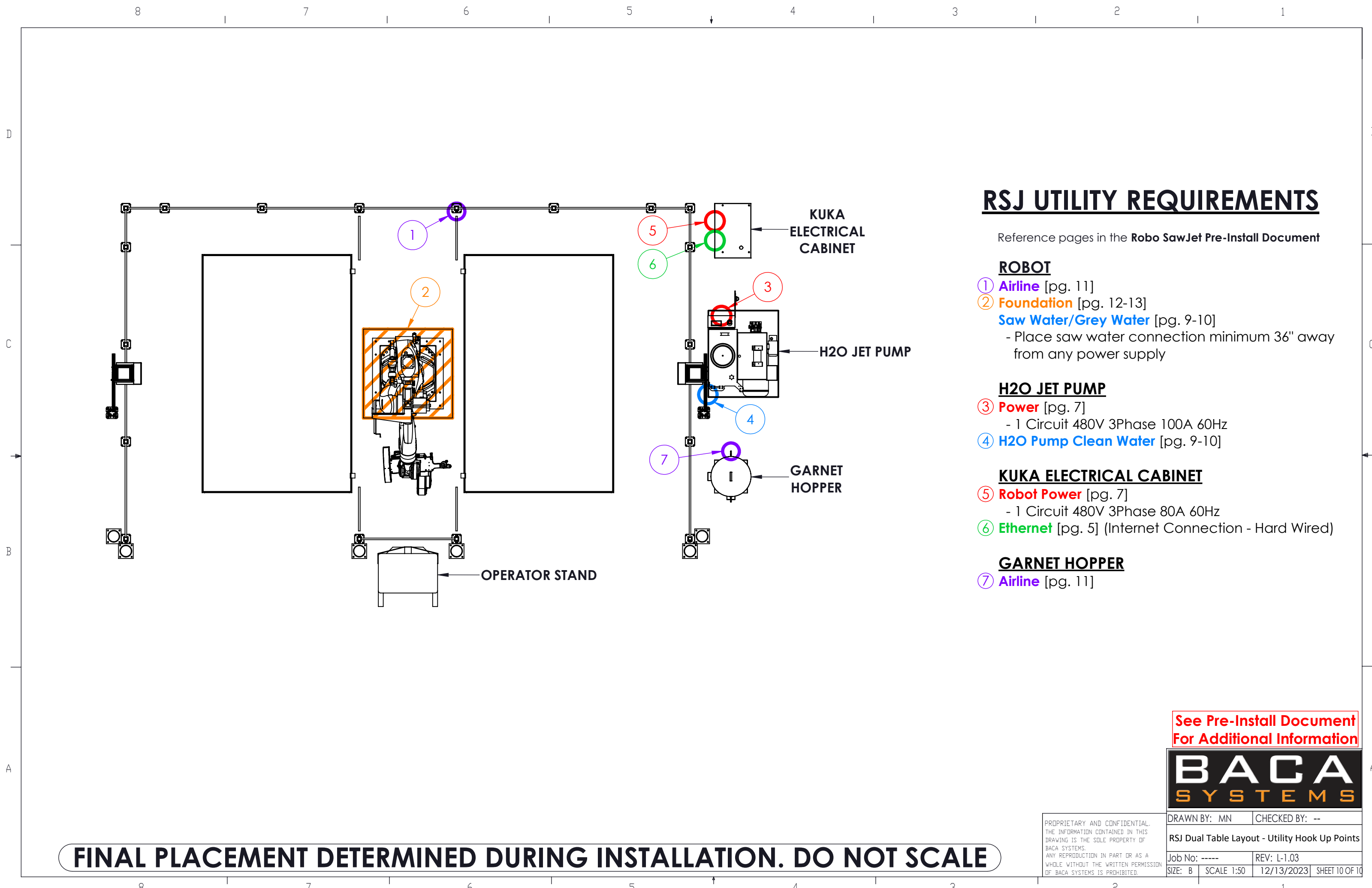
Required overhead clearance **without** camera posts:
11'-0"

See Pre-Install Document
For Additional Information



FINAL PLACEMENT DETERMINED DURING INSTALLATION. DO NOT SCALE

PROPRIETARY AND CONFIDENTIAL. THE INFORMATION CONTAINED IN THIS DRAWING IS THE SOLE PROPERTY OF BACA SYSTEMS. ANY REPRODUCTION IN PART OR AS A WHOLE WITHOUT THE WRITTEN PERMISSION OF BACA SYSTEMS IS PROHIBITED.	DRAWN BY: MN		CHECKED BY: --	
	RSJ Dual Table Layout - Elevation View			
	Job No: -----		REV: L-1.03	
	SIZE: B	SCALE 1:50	12/13/2023	SHEET 9 OF 10



RSJ UTILITY REQUIREMENTS

Reference pages in the **Robo SawJet Pre-Install Document**

ROBOT

- ① **Airline** [pg. 11]
- ② **Foundation** [pg. 12-13]
- Saw Water/Grey Water** [pg. 9-10]
 - Place saw water connection minimum 36" away from any power supply

H2O JET PUMP

- ③ **Power** [pg. 7]
 - 1 Circuit 480V 3Phase 100A 60Hz
- ④ **H2O Pump Clean Water** [pg. 9-10]

KUKA ELECTRICAL CABINET

- ⑤ **Robot Power** [pg. 7]
 - 1 Circuit 480V 3Phase 80A 60Hz
- ⑥ **Ethernet** [pg. 5] (Internet Connection - Hard Wired)

GARNET HOPPER

- ⑦ **Airline** [pg. 11]

See Pre-Install Document
For Additional Information



PROPRIETARY AND CONFIDENTIAL. THE INFORMATION CONTAINED IN THIS DRAWING IS THE SOLE PROPERTY OF BACA SYSTEMS. ANY REPRODUCTION IN PART OR AS A WHOLE WITHOUT THE WRITTEN PERMISSION OF BACA SYSTEMS IS PROHIBITED.				DRAWN BY: MN	CHECKED BY: --
RSJ Dual Table Layout - Utility Hook Up Points					
Job No: -----		REV: L-1.03			
SIZE: B	SCALE 1:50	12/13/2023	SHEET 10 OF 10		

FINAL PLACEMENT DETERMINED DURING INSTALLATION. DO NOT SCALE