

RSJM Dual Pocket Left Utilities

System Dimension:

31'-6 1/4" x 18'-6 1/2"

Overall Footprint (incl. utilities & clearance):

39'-4" x 21'-2"

Utility Requirements

Power:

- 1 Circuit 480V 3Phase 80A (65 FLA) (Robot)
- 1 Circuit 480V 3Phase 100A (63 FLA) (Pump)

Air:

- 5 CFM @ 85-100 PSI Range (Robot)
- 3 CFM @ 60-100 PSI Range (Garnet Hopper)

Water:

- 1 Source Clean
 - 1 Port 4gpm (Waterjet)
 - 1 Port 3-5gpm <65°F (Pump Cooling Water)
- 1 Source Gray 5gpm (Saw Water)

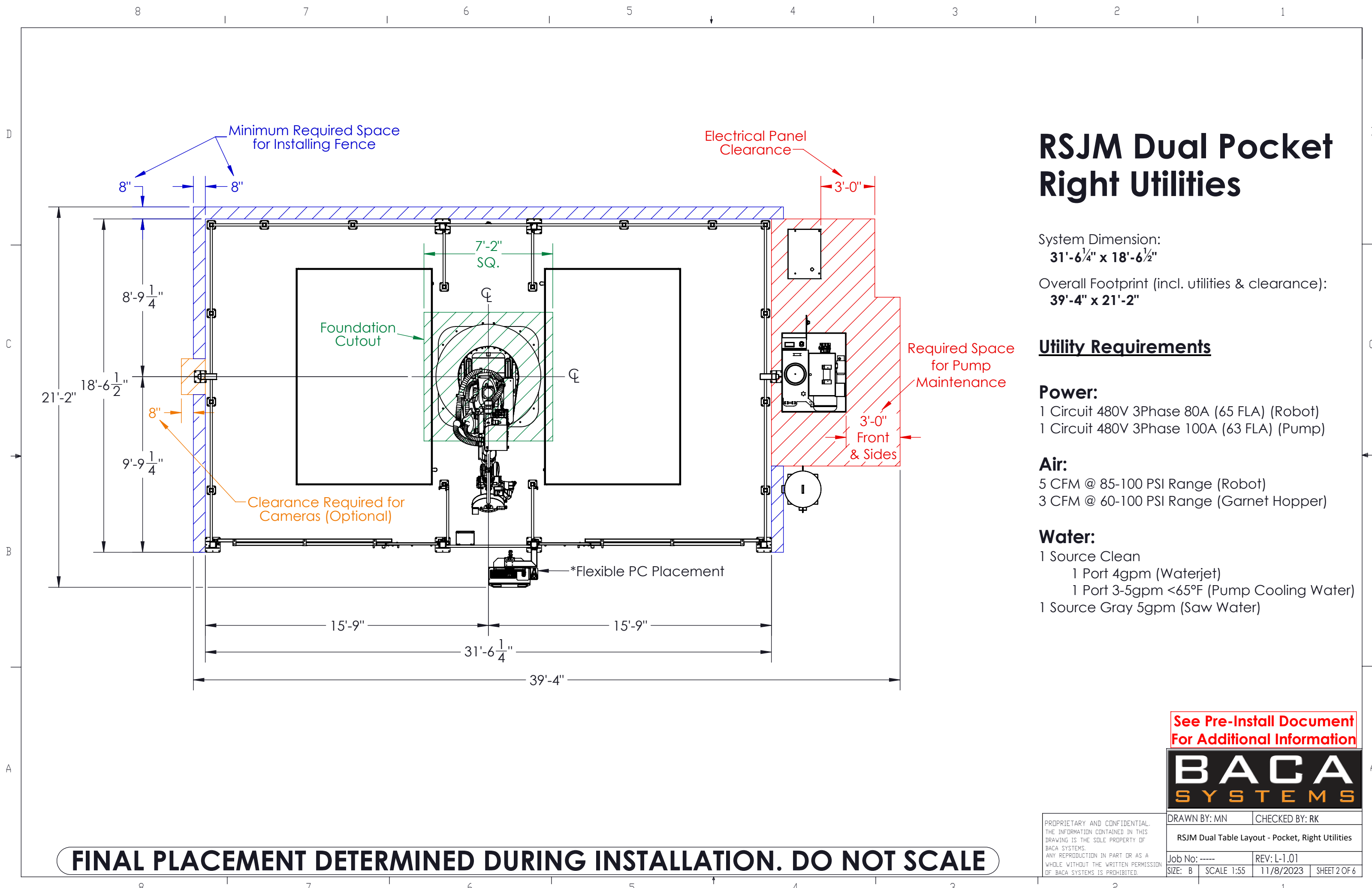
FINAL PLACEMENT DETERMINED DURING INSTALLATION. DO NOT SCALE

See Pre-Install Document For Additional Information



PROPRIETARY AND CONFIDENTIAL. THE INFORMATION CONTAINED IN THIS DRAWING IS THE SOLE PROPERTY OF BACA SYSTEMS. ANY REPRODUCTION IN PART OR AS A WHOLE WITHOUT THE WRITTEN PERMISSION OF BACA SYSTEMS IS PROHIBITED.

DRAWN BY: MN	CHECKED BY: RK
RSJM Dual Table Layout - Pocket, Left Utilities	
Job No: -----	REV: L-1.01
SIZE: B	SCALE 1:55
11/8/2023	SHEET 1 OF 6



RSJM Dual Pocket Right Utilities

System Dimension:
31'-6 1/4" x 18'-6 1/2"

Overall Footprint (incl. utilities & clearance):
39'-4" x 21'-2"

Utility Requirements

Power:
 1 Circuit 480V 3Phase 80A (65 FLA) (Robot)
 1 Circuit 480V 3Phase 100A (63 FLA) (Pump)

Air:
 5 CFM @ 85-100 PSI Range (Robot)
 3 CFM @ 60-100 PSI Range (Garnet Hopper)

Water:
 1 Source Clean
 1 Port 4gpm (Waterjet)
 1 Port 3-5gpm <65°F (Pump Cooling Water)
 1 Source Gray 5gpm (Saw Water)

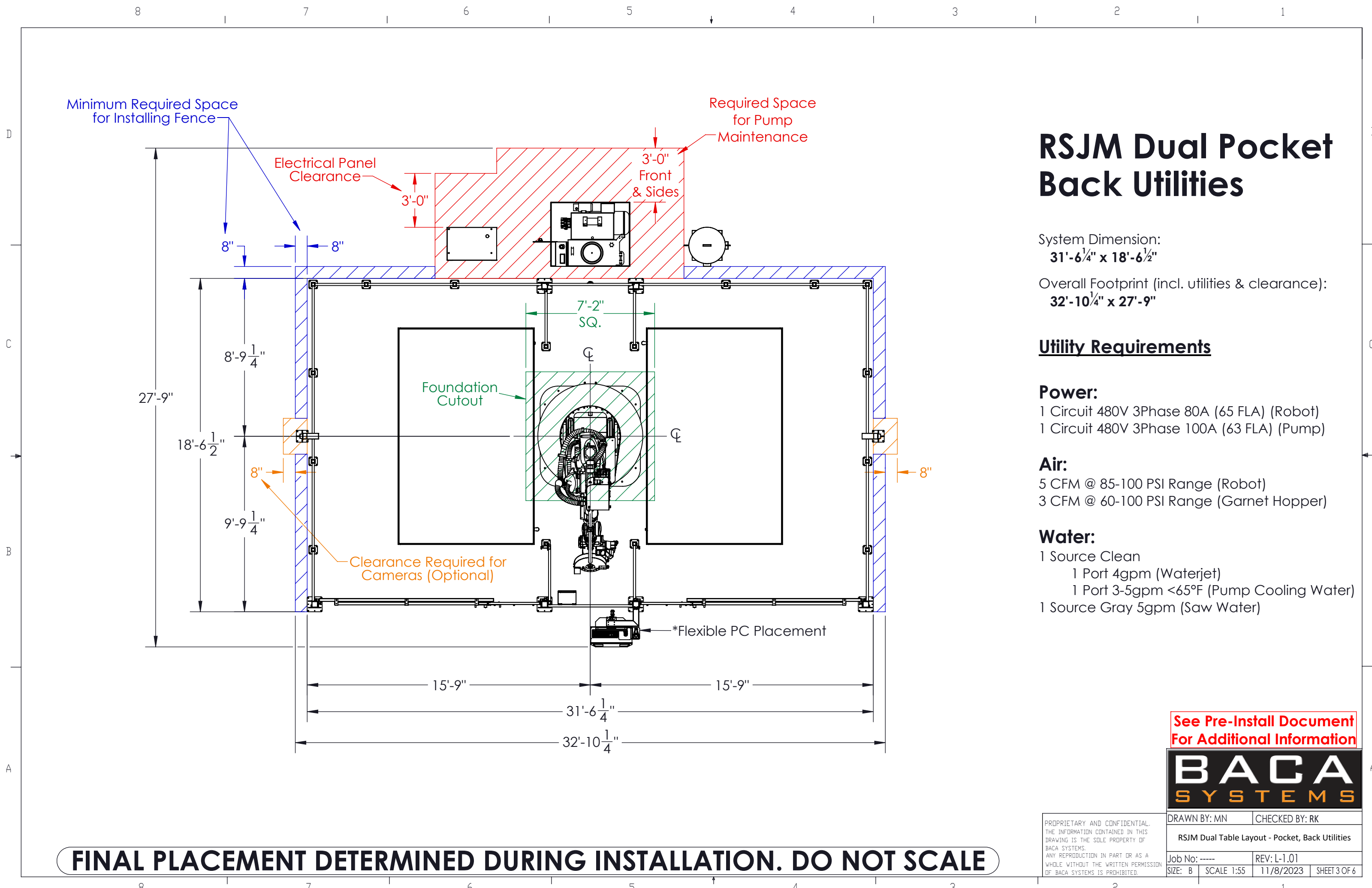
See Pre-Install Document For Additional Information



PROPRIETARY AND CONFIDENTIAL. THE INFORMATION CONTAINED IN THIS DRAWING IS THE SOLE PROPERTY OF BACA SYSTEMS. ANY REPRODUCTION IN PART OR AS A WHOLE WITHOUT THE WRITTEN PERMISSION OF BACA SYSTEMS IS PROHIBITED.

DRAWN BY: MN	CHECKED BY: RK
RSJM Dual Table Layout - Pocket, Right Utilities	
Job No: -----	REV: L-1.01
SIZE: B	SCALE 1:55
11/8/2023	SHEET 2 OF 6

FINAL PLACEMENT DETERMINED DURING INSTALLATION. DO NOT SCALE



RSJM Dual Pocket Back Utilities

System Dimension:

31'-6¹/₄" x 18'-6¹/₂"

Overall Footprint (incl. utilities & clearance):

32'-10¹/₄" x 27'-9"

Utility Requirements

Power:

- 1 Circuit 480V 3Phase 80A (65 FLA) (Robot)
- 1 Circuit 480V 3Phase 100A (63 FLA) (Pump)

Air:

- 5 CFM @ 85-100 PSI Range (Robot)
- 3 CFM @ 60-100 PSI Range (Garnet Hopper)

Water:

- 1 Source Clean
 - 1 Port 4gpm (Waterjet)
 - 1 Port 3-5gpm <65°F (Pump Cooling Water)
- 1 Source Gray 5gpm (Saw Water)

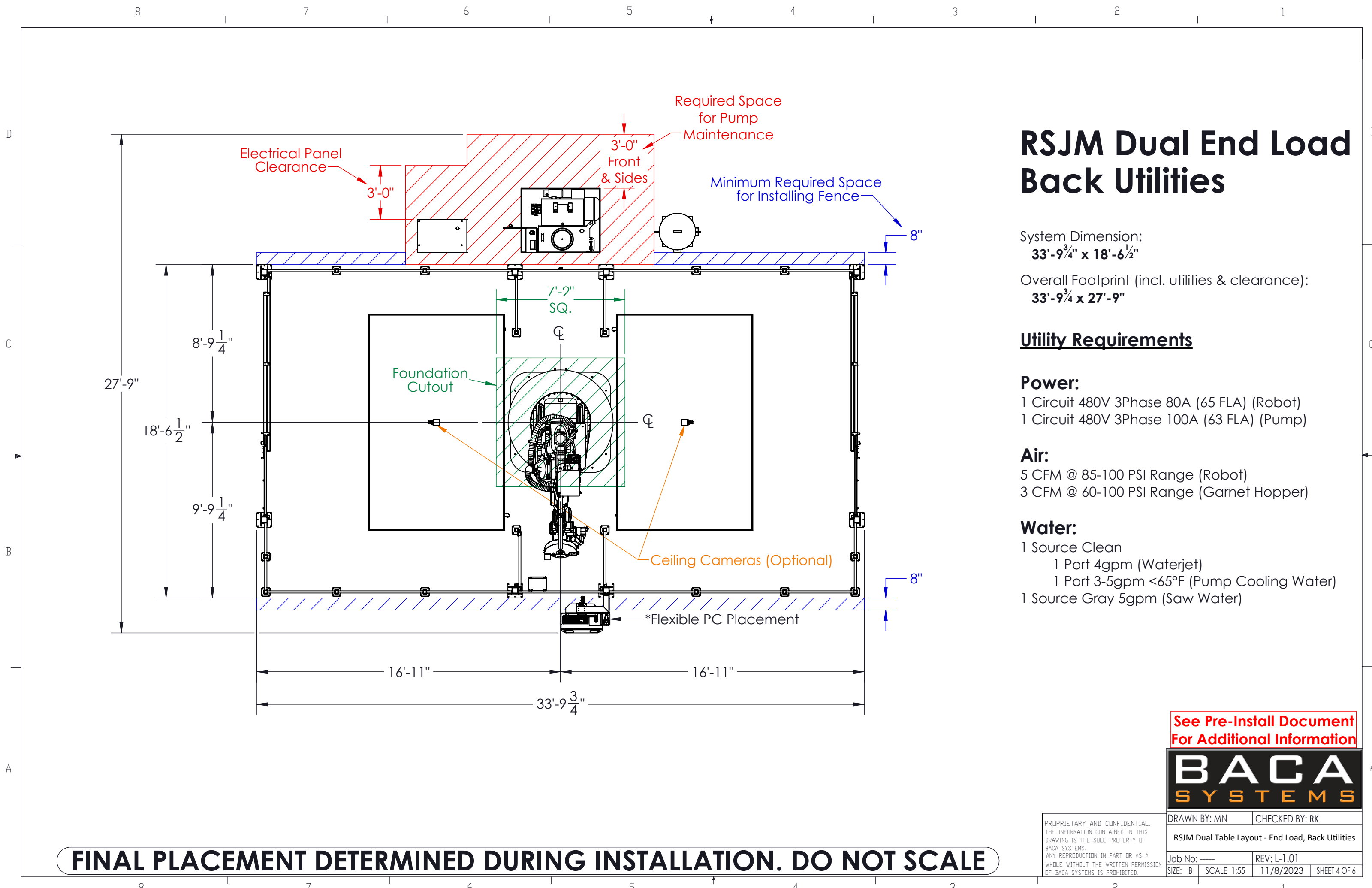
See Pre-Install Document For Additional Information



PROPRIETARY AND CONFIDENTIAL. THE INFORMATION CONTAINED IN THIS DRAWING IS THE SOLE PROPERTY OF BACA SYSTEMS. ANY REPRODUCTION IN PART OR AS A WHOLE WITHOUT THE WRITTEN PERMISSION OF BACA SYSTEMS IS PROHIBITED.

DRAWN BY: MN		CHECKED BY: RK	
RSJM Dual Table Layout - Pocket, Back Utilities			
Job No: -----	REV: L-1.01		
SIZE: B	SCALE 1:55	11/8/2023	SHEET 3 OF 6

FINAL PLACEMENT DETERMINED DURING INSTALLATION. DO NOT SCALE



RSJM Dual End Load Back Utilities

System Dimension:

33'-9³/₄" x 18'-6¹/₂"

Overall Footprint (incl. utilities & clearance):

33'-9³/₄" x 27'-9"

Utility Requirements

Power:

- 1 Circuit 480V 3Phase 80A (65 FLA) (Robot)
- 1 Circuit 480V 3Phase 100A (63 FLA) (Pump)

Air:

- 5 CFM @ 85-100 PSI Range (Robot)
- 3 CFM @ 60-100 PSI Range (Garnet Hopper)

Water:

- 1 Source Clean
 - 1 Port 4gpm (Waterjet)
 - 1 Port 3-5gpm <65°F (Pump Cooling Water)
- 1 Source Gray 5gpm (Saw Water)

FINAL PLACEMENT DETERMINED DURING INSTALLATION. DO NOT SCALE

See Pre-Install Document For Additional Information



PROPRIETARY AND CONFIDENTIAL. THE INFORMATION CONTAINED IN THIS DRAWING IS THE SOLE PROPERTY OF BACA SYSTEMS. ANY REPRODUCTION IN PART OR AS A WHOLE WITHOUT THE WRITTEN PERMISSION OF BACA SYSTEMS IS PROHIBITED.

DRAWN BY: MN		CHECKED BY: RK	
RSJM Dual Table Layout - End Load, Back Utilities			
Job No: -----		REV: L-1.01	
SIZE: B	SCALE 1:55	11/8/2023	SHEET 4 OF 6

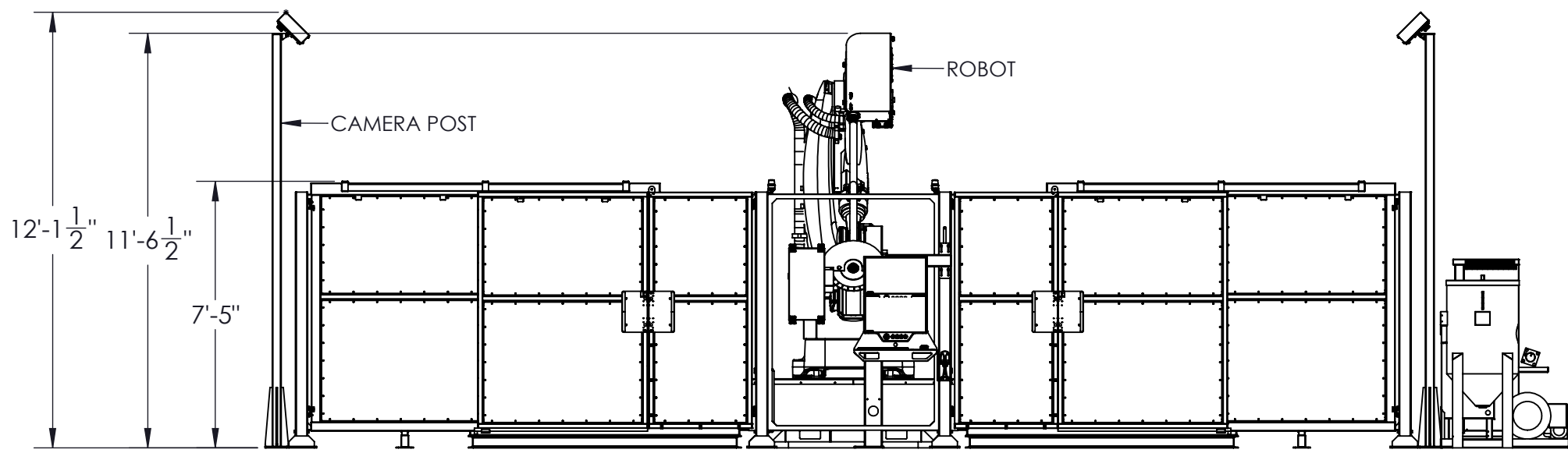
8 | 7 | 6 | 5 | 4 | 3 | 2 | 1

D

C

B

A



RSJM Dual Table Layout Elevation View

Required overhead clearance with cameras:
12'-2"

Required overhead clearance without cameras:
11'-7"

**See Pre-Install Document
For Additional Information**

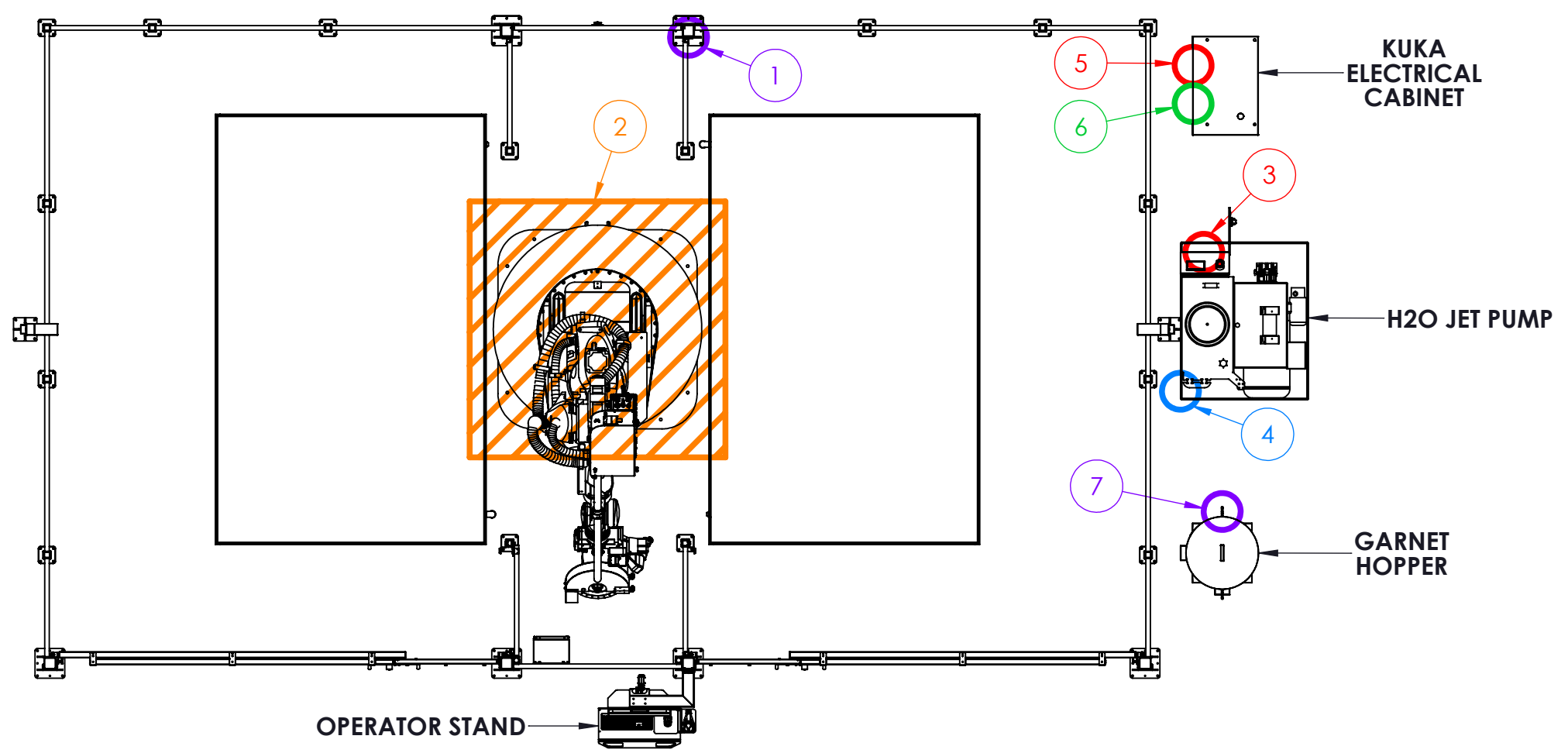


PROPRIETARY AND CONFIDENTIAL.
THE INFORMATION CONTAINED IN THIS
DRAWING IS THE SOLE PROPERTY OF
BACA SYSTEMS.
ANY REPRODUCTION IN PART OR AS A
WHOLE WITHOUT THE WRITTEN PERMISSION
OF BACA SYSTEMS IS PROHIBITED.

DRAWN BY: MN		CHECKED BY: RK	
RSJM Dual Table Layout - Elevation View			
Job No: -----		REV: L-1.01	
SIZE: B	SCALE 1:50	11/8/2023	SHEET 5 OF 6

FINAL PLACEMENT DETERMINED DURING INSTALLATION. DO NOT SCALE

8 | 7 | 6 | 5 | 4 | 3 | 2 | 1



RSJM UTILITY REQUIREMENTS

Reference pages in the **Robo SawJet M-Series Pre-Install Document**

ROBOT

- ① **Airline** [pg. 13]
- ② **Foundation** [pg. 14]
- Saw Water/Grey Water** [pg. 12]
 - Place saw water connection minimum 36" away from any power supply

H2O JET PUMP

- ③ **Power** [pg. 8]
 - 1 Circuit 480V 3Phase 100A 60Hz
- ④ **H2O Pump Clean Water** [pg. 9]

KUKA ELECTRICAL CABINET

- ⑤ **Robot Power** [pg. 8]
 - 1 Circuit 480V 3Phase 80A 60Hz
- ⑥ **Ethernet** [pg. 3] (Internet Connection - Hard Wired)

GARNET HOPPER

- ⑦ **Airline** [pg. 13]

See Pre-Install Document For Additional Information



PROPRIETARY AND CONFIDENTIAL. THE INFORMATION CONTAINED IN THIS DRAWING IS THE SOLE PROPERTY OF BACA SYSTEMS. ANY REPRODUCTION IN PART OR AS A WHOLE WITHOUT THE WRITTEN PERMISSION OF BACA SYSTEMS IS PROHIBITED.

DRAWN BY: MN		CHECKED BY: RK	
RSJM Dual Table Layout - Utility Hook Up Points			
Job No: -----	REV: L-1.01		
SIZE: B	SCALE 1:50	11/8/2023	SHEET 6 OF 6

FINAL PLACEMENT DETERMINED DURING INSTALLATION. DO NOT SCALE