



# BACA Miter X

Miter machine  
Pre-Installation Document



# PRE-INSTALL PACKAGE

Overview of Installation Requirements		
Topic	Overview	Detailed Information Page
<b>ELECTRICAL REQUIREMENTS</b>	220V, 90 AMPS, 3 PHASE, 60HZ. This is a dedicated drop to the panel. Customer supplied.	1
<b>WATER REQUIREMENTS</b>	5 GPM @ 35 PSI. Water must be filtered to 50 microns. Customer supplied.	2
<b>SAW BLADE REQUIREMENTS</b>	14" diameter blade.	3
<b>AIR REQUIREMENTS</b>	10 cfm at 80 psi. Customer supplied.	3
<b>SPACE REQUIREMENT</b>	255" x 154" space requirement.	4
<b>ENVIRONMENT REQUIREMENTS</b>	The machine is designed to operate within a temperature range of 41°F – 113°F	4
<b>UNPACKING PROCEDURE</b>	All shipping material must be removed before operation.	5
<b>LEVELING PROCEDURE</b>	Proper procedure for positioning table extension.	5
<b>MAINTENANCE REQUIREMENTS</b>	Weekly maintenance is required.	5

## 1. ELECTRICAL REQUIREMENTS

The BACA Miter X requires a power circuit. It is **the customer's responsibility to contract a qualified licensed electrician to run AND connect the electrical power to the machine.**

**BACA is available to answer any questions** your electrician might have.

Electrical services available must be routed to the area near the machine location before scheduled installation date. Below are power services and connections the customer is to provide:

a. **System power**

220 VAC, 3 phase, protected by a circuit breaker or fused disconnect for 90 amps. If customer's facility has a different voltage, the customer is responsible for a step-up/down transformer to supply between 200-240VAC. Consult BACA project manager for more details. **Must Be Copper.** (Terminal lugs are not large enough to handle aluminum.)

**2. WATER REQUIREMENTS**

The BACA Miter X requires one (1) water utility. It is the customer's responsibility to provide this water sources and connect them to the machine as required. Below are the water requirements:

This water is used to cool the saw blade. It can be clean city water or recycled process water (commonly referred to as "gray water") and must be filtered to 50 microns. Supplemental filtration may be required. A minimum of 5 GPM at 35 PSI is required but added benefit can be attained with 12 GPM at 50 PSI. The connection on the machine is a standard 1/2" female connection and the customer supplied connection is at the back-right side of the machine.

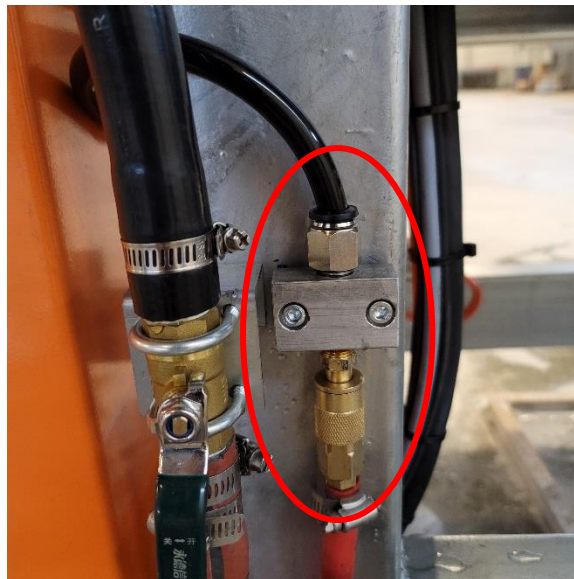


**3. SAW BLADE REQUIREMENTS**

The BACA Miter X requires a 14" diameter saw blade with 8mm diamond segment. No other blade sizes can be used. Segment size of saw blade is based on customer's preference.

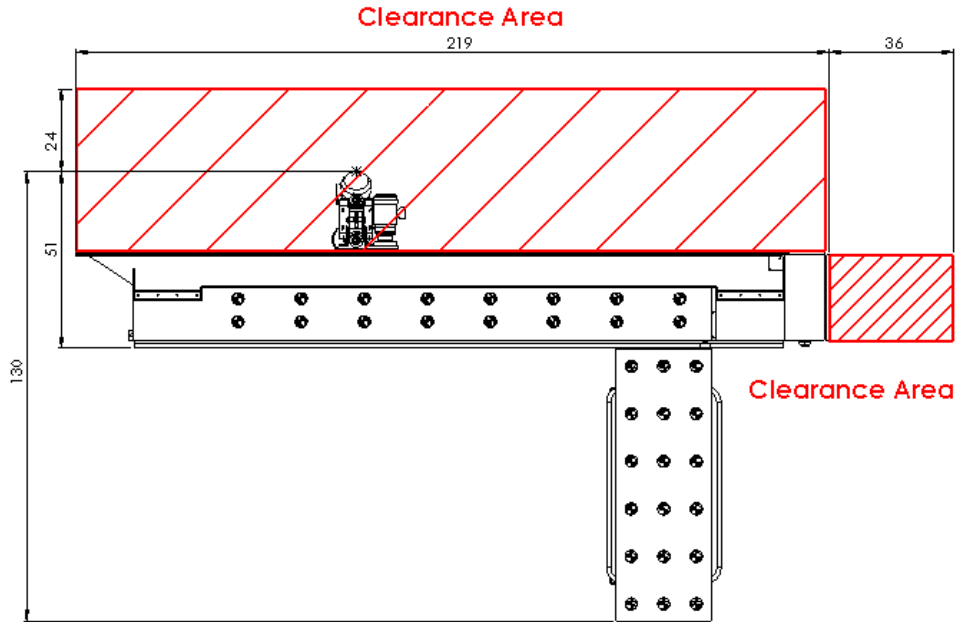
#### 4. AIR REQUIREMENTS

The BACA Miter X requires a single air connection. Main system requires 10 CFM @ 80 PSI. This customer supplied connection is made on the back-right side of the machine. It uses a standard 1/4" air quick disconnect fitting. The air **MUST** be running through a dryer after the air compressor. This will help catch the remaining water that is in the system.



## 5. SPACE REQUIREMENT

The BACA Miter X has a footprint of 255" x 154". The floor that the machine sits on should be the same in front of the machine, so the extension tables are on the same plane. The additional 24" is required behind the machine to allow maintenance and adjustment of saw motor and the 36" clearance area on the right is required by OSHA for the electrical cabinet. See image below:



## 6. ENVIRONMENTAL REQUIREMENTS

The BACA Miter X is designed to operate in an environment with a temperature range between 41° F and 113° F. For facilities that have conditions that fall outside of this temperature range, additional climate control equipment may be required.

## 7. Unpacking Procedure

Remove zip ties on Cat-Track and red shipping brackets.

## 8. Leveling Procedure

Verify that the extension table is in the same plane as the cutting table, adjust height of caster wheels as needed. Verify that white plastic roller wheels are both engaged to rail. At customer's request, each corner leg of Miter X 2.0 can be lagged to the floor.



## 9. Maintenance Requirement

1. Inspect and lubricate linear rails weekly at a minimum.
  - a. With the carriage in motion, slowly pump oil to lubricate rails. Use Chevron Multifak EP00 grease or an acceptable substitute.
2. Hose down table between jobs
3. Wash rollers between jobs.
4. Check rollers for smooth operation and/or damage daily
5. Replace rollers immediately when needed. Rollers are a consumable.

## 10. ADDITIONAL CUSTOMER RESPONSIBILITIES

As described above, **the customer shall provide all power, water, drain, and air utilities.** All utilities will be running to and landed in the BACA Miter X by the customer.

Customer shall determine where the machine will be installed before the arrival of the installers. System layout drawings are provided, upon request. **Customer is responsible for placing the machine as provided in the drawing.**

Customer supplied forklift shall be **an AK Forklift** to remove 5,000lb machine from truck.